

## SMARCD1 antibody

### Product Information

Catalog No.:	FNab08011
Size:	100µg
Form:	liquid
Purification:	Protein A+G purification
Purity:	≥95% as determined by SDS-PAGE
Host:	Mouse
Clonality:	monoclonal
Clone ID:	1A7
IsoType:	IgG1
Storage:	PBS with 0.02% sodium azide and 50% glycerol pH 7.3, -20°C for 12 months(Avoid repeated freeze / thaw cycles.)

### Background

Involved in chromatin remodeling. Belongs to the neural progenitors-specific chromatin remodeling complex(npBAF complex) and the neuron-specific chromatin remodeling complex(nBAF complex). During neural development a switch from a stem/progenitor to a post-mitotic chromatin remodeling mechanism occurs as neurons exit the cell cycle and become committed to their adult state. The transition from proliferating neural stem/progenitor cells to post-mitotic neurons requires a switch in subunit composition of the npBAF and nBAF complexes. As neural progenitors exit mitosis and differentiate into neurons, npBAF complexes which contain ACTL6A/BAF53A and PHF10/BAF45A, are exchanged for homologous alternative ACTL6B/BAF53B and DPF1/BAF45B or DPF3/BAF45C subunits in neuron-specific complexes(nBAF). The npBAF complex is essential for the self-renewal/proliferative capacity of the multipotent neural stem cells. The nBAF complex along with CREST plays a role regulating the activity of genes essential for dendrite growth(By similarity). Has a strong influence on vitamin D-mediated transcriptional activity from an enhancer vitamin D receptor element(VDRE). May be a link between mammalian SWI-SNF-like chromatin remodeling complexes and the vitamin D receptor(VDR) heterodimer. Mediates critical interactions between nuclear receptors and the BRG1/SMARCA4 chromatin-remodeling complex for transactivation.

### Immunogen information

Immunogen:	SWI/SNF related, matrix associated, actin dependent regulator of chromatin, subfamily d, member 1
Synonyms:	SWI/SNF-related matrix-associated actin-dependent regulator of chromatin subfamily D member 1 60 kDa BRG-1/Brm-associated factor

subunit A|BRG1-associated factor 60A (BAF60A)|SWI/SNF complex  
60 kDa subunit|SMARCD1|BAF60A

Observed MW: 58 kDa

Uniprot ID : Q96GM5

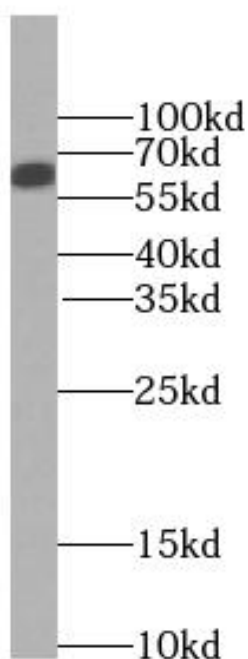
### Application

Reactivity: Human

Tested Application: ELISA, WB

Recommended dilution: WB: 1:500-1:2000

Image:



Jurkat cells were subjected to SDS PAGE followed by western blot with FNab08011(SMARCD1 antibody) at dilution of 1:1000