

SMARCC1 antibody

Product Information

Catalog No.:	FNab08009
Size:	100µg
Form:	liquid
Purification:	Immunogen affinity purified
Purity:	≥95% as determined by SDS-PAGE
Host:	Rabbit
Clonality:	polyclonal
Clone ID:	None
IsoType:	IgG
Storage:	PBS with 0.02% sodium azide and 50% glycerol pH 7.3, -20°C for 12 months (Avoid repeated freeze / thaw cycles.)

Background

The protein encoded by this gene is a member of the SWI/SNF family of proteins, whose members display helicase and ATPase activities and which are thought to regulate transcription of certain genes by altering the chromatin structure around those genes. The encoded protein is part of the large ATP-dependent chromatin remodeling complex SNF/SWI and contains a predicted leucine zipper motif typical of many transcription factors.

Immunogen information

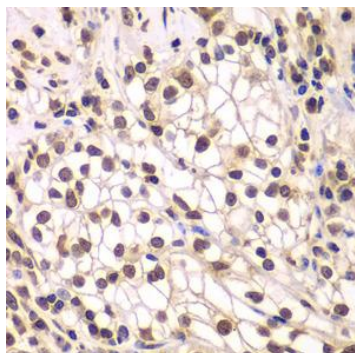
Immunogen:	SWI/SNF related, matrix associated, actin dependent regulator of chromatin, subfamily c, member 1
Synonyms:	SWI/SNF complex subunit SMARCC1 BRG1-associated factor 155 (BAF155) SWI/SNF complex 155 kDa subunit SWI/SNF-related matrix-associated actin-dependent regulator of chromatin subfamily C member 1 SMARCC1 BAF155
Observed MW:	163 kDa
Uniprot ID :	Q92922

Application

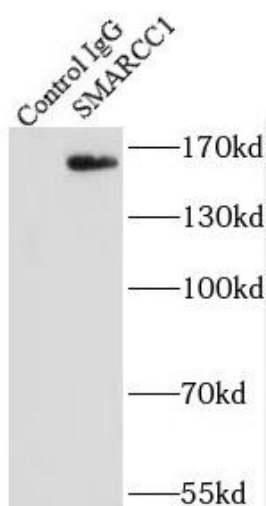
Reactivity:	Human
Tested Application:	ELISA, WB, IHC, IP

Recommended dilution: WB: 1:500 - 1:2000; IHC: 1:50 - 1:200; IP: 1:50 - 1:200

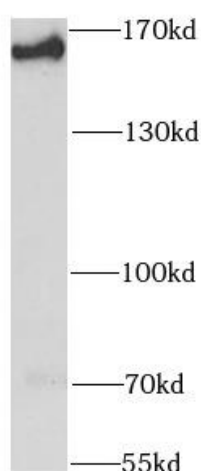
Image:



Immunohistochemistry of paraffin-embedded human kidney cancer using FNab08009(SMARCC1 antibody) at dilution of 1:100



IP Result of anti-SMARCC1 (IP:FNab08009, 4ug; Detection:FNab08009 1:600) with mouse brain tissue lysate 4000ug.



K-562 cells were subjected to SDS PAGE followed by western blot with FNab08009(SMARCC1 antibody) at dilution of 1:1000