

SMARCB1 antibody

Product Information

Catalog No.:	FNab08008
Size:	100µg
Form:	liquid
Purification:	Immunogen affinity purified
Purity:	≥95% as determined by SDS-PAGE
Host:	Rabbit
Clonality:	polyclonal
Clone ID:	None
IsoType:	IgG
Storage:	PBS with 0.02% sodium azide and 50% glycerol pH 7.3, -20°C for 12 months (Avoid repeated freeze / thaw cycles.)

Background

The protein encoded by this gene is part of a complex that relieves repressive chromatin structures, allowing the transcriptional machinery to access its targets more effectively. The encoded nuclear protein may also bind to and enhance the DNA joining activity of HIV-1 integrase. This gene has been found to be a tumor suppressor, and mutations in it have been associated with malignant rhabdoid tumors. Alternatively spliced transcript variants have been found for this gene.

Immunogen information

Immunogen:	SWI/SNF related, matrix associated, actin dependent regulator of chromatin, subfamily b, member 1
Synonyms:	SWI/SNF-related matrix-associated actin-dependent regulator of chromatin subfamily B member 1 BRG1-associated factor 47 (BAF47) Integrase interactor 1 protein SNF5 homolog (hSNF5) SMARCB1 BAF47 INI1 SNF5L1
Observed MW:	44 kDa
Uniprot ID :	Q12824

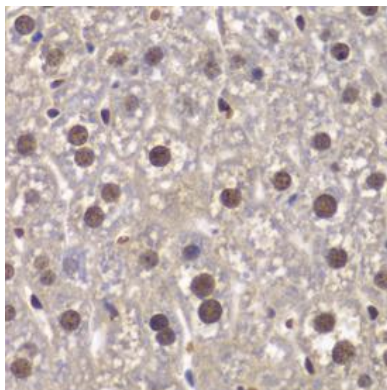
Application

Reactivity:	Human, Mouse, Rat
-------------	-------------------

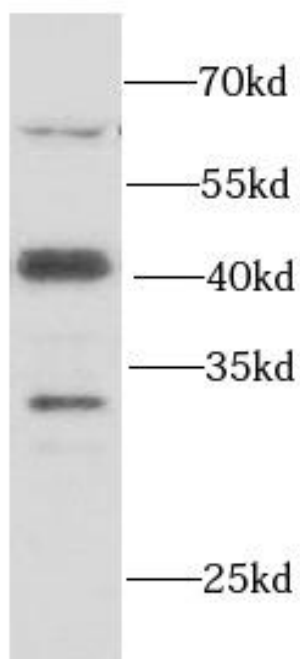
Tested Application: ELISA, WB, IHC

Recommended dilution: WB: 1:500 - 1:2000; IHC: 1:50 - 1:200

Image:



Immunohistochemistry of paraffin-embedded mouse liver using FNab08008(SMARCB1 Antibody) at dilution of 1:100



HeLa cells were subjected to SDS PAGE followed by western blot with FNab08008(SMARCB1 antibody) at dilution of 1:1000