

SMAD1 antibody

Product Information

Catalog No.:	FNab07992
Size:	100µg
Form:	liquid
Purification:	Immunogen affinity purified
Purity:	≥95% as determined by SDS-PAGE
Host:	Rabbit
Clonality:	polyclonal
Clone ID:	None
IsoType:	IgG
Storage:	PBS with 0.02% sodium azide and 50% glycerol pH 7.3, -20°C for 12 months (Avoid repeated freeze / thaw cycles.)

Background

The protein encoded by this gene belongs to the SMAD, a family of proteins similar to the gene products of the *Drosophila* gene *mothers against decapentaplegic* (Mad) and the *C. elegans* gene *Sma*. SMAD proteins are signal transducers and transcriptional modulators that mediate multiple signaling pathways. This protein mediates the signals of the bone morphogenetic proteins (BMPs), which are involved in a range of biological activities including cell growth, apoptosis, morphogenesis, development and immune responses. In response to BMP ligands, this protein can be phosphorylated and activated by the BMP receptor kinase. The phosphorylated form of this protein forms a complex with SMAD4, which is important for its function in the transcription regulation. This protein is a target for SMAD-specific E3 ubiquitin ligases, such as SMURF1 and SMURF2, and undergoes ubiquitination and proteasome-mediated degradation. Alternatively spliced transcript variants encoding the same protein have been observed.

Immunogen information

Immunogen:	SMAD family member 1
Synonyms:	Mothers against decapentaplegic homolog 1 (MAD homolog 1, Mothers against DPP homolog 1) JV4-1 Mad-related protein 1 SMAD family member 1 (SMAD 1, Smad1, hSMAD1) Transforming growth factor-beta-signaling protein 1 (BSP-1) SMAD1 BSP1 MADH1 MADR1
Observed MW:	54 kDa
Uniprot ID :	Q15797

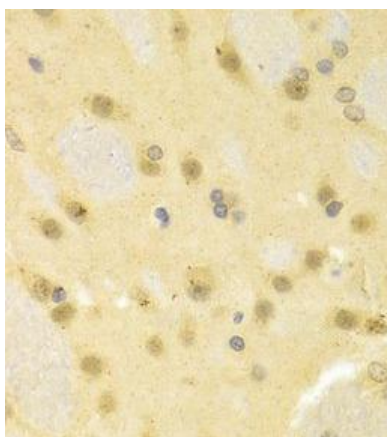
Application

Reactivity: Human, Mouse, Rat

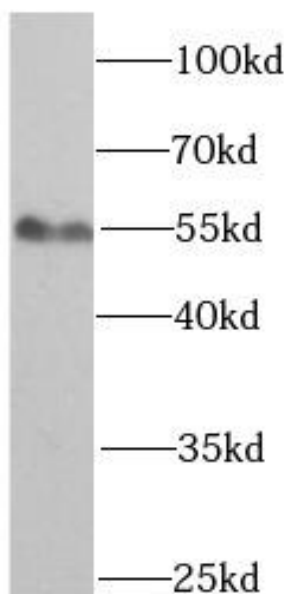
Tested Application: ELISA, WB, IHC, IF

Recommended dilution: WB: 1:500 - 1:2000; IHC: 1:50 - 1:200; IF: 1:50 - 1:200

Image:



Immunohistochemistry of paraffin-embedded rat brain using FNab07992(SMAD1 antibody) at dilution of 1:100



HepG2 cells were subjected to SDS PAGE followed by western blot with FNab07992(SMAD1 antibody) at dilution of 1:1000