

SLC6A8 antibody

Product Information

Catalog No.:	FNab07973
Size:	100µg
Form:	liquid
Purification:	Immunogen affinity purified
Purity:	≥95% as determined by SDS-PAGE
Host:	Rabbit
Clonality:	polyclonal
Clone ID:	None
IsoType:	IgG
Storage:	PBS with 0.02% sodium azide and 50% glycerol pH 7.3, -20°C for 12 months(Avoid repeated freeze / thaw cycles.)

Background

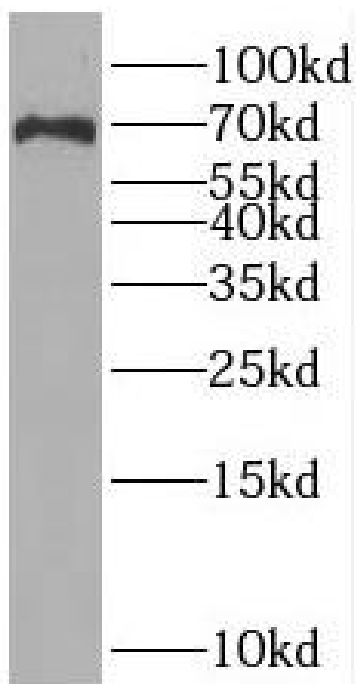
Required for the uptake of creatine in muscles and brain.

Immunogen information

Immunogen:	solute carrier family 6(neurotransmitter transporter, creatine), member 8
Synonyms:	Sodium- and chloride-dependent creatine transporter 1 (CT1, Creatine transporter 1) Solute carrier family 6 member 8 SLC6A8
Observed MW:	65-70 kDa
Uniprot ID :	P48029

Application

Reactivity:	Human
Tested Application:	ELISA, WB
Recommended dilution:	WB: 1:500-1:2000
Image:	



HUVEC cells were subjected to SDS PAGE followed by western blot with FNab07973(SLC6A8 Antibody) at dilution of 1:600