

SLC5A8 antibody

Product Information

Catalog No.:	FNab07972
Size:	100µg
Form:	liquid
Purification:	Immunogen affinity purified
Purity:	≥95% as determined by SDS-PAGE
Host:	Rabbit
Clonality:	polyclonal
Clone ID:	None
IsoType:	IgG
Storage:	PBS with 0.02% sodium azide and 50% glycerol pH 7.3, -20°C for 12 months(Avoid repeated freeze / thaw cycles.)

Background

Acts as an electrogenic sodium(Na(+)) and chloride(Cl-)-dependent sodium-coupled solute transporter, including transport of monocarboxylates(short-chain fatty acids including L-lactate, D-lactate, pyruvate, acetate, propionate, valerate and butyrate), lactate, monocarboxylate drugs(nicotinate, benzoate, salicylate and 5-aminosalicylate) and ketone bodies(beta-D-hydroxybutyrate, acetoacetate and alpha-ketoisocaproate), with a Na(+):substrate stoichiometry of between 4:1 and 2:1. Catalyzes passive carrier mediated diffusion of iodide. Mediates iodide transport from the thyrocyte into the colloid lumen through the apical membrane. May be responsible for the absorption of D-lactate and monocarboxylate drugs from the intestinal tract. Acts as a tumor suppressor, suppressing colony formation in colon cancer, prostate cancer and glioma cell lines. May play a critical role in the entry of L-lactate and ketone bodies into neurons by a process driven by an electrochemical Na(+) gradient and hence contribute to the maintenance of the energy status and function of neurons.

Immunogen information

Immunogen:	solute carrier family 5(iodide transporter), member 8
Synonyms:	Sodium-coupled monocarboxylate transporter 1 Apical iodide transporter Electrogenic sodium monocarboxylate cotransporter Sodium iodide-related cotransporter Solute carrier family 5 member 8 SLC5A8 AIT SMCT SMCT1
Observed MW:	67 kDa
Uniprot ID :	Q8N695

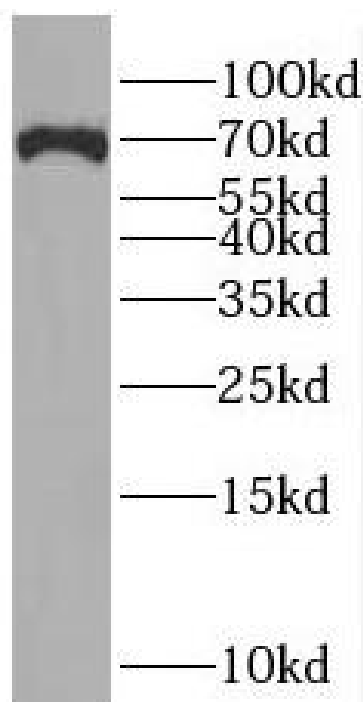
Application

Reactivity: Human, Mouse, Rat

Tested Application: ELISA, IF, WB

Recommended dilution: WB: 1:500-1:2000; IF: 1:20-1:200

Image:



rat kidney tissue were subjected to SDS PAGE followed by western blot with FNab07972(SLC5A8 Antibody) at dilution of 1:1000