

SLC38A4 antibody

Product Information

Catalog No.:	FNab07961
Size:	100µg
Form:	liquid
Purification:	Immunogen affinity purified
Purity:	≥95% as determined by SDS-PAGE
Host:	Rabbit
Clonality:	polyclonal
Clone ID:	None
IsoType:	IgG
Storage:	PBS with 0.02% sodium azide and 50% glycerol pH 7.3, -20°C for 12 months(Avoid repeated freeze / thaw cycles.)

Background

Sodium-dependent amino acid transporter. Mediates electrogenic symport of neutral amino acids and sodium ions. Has a broad specificity, with a preference for Ala, followed by His, Cys, Asn, Ser, Gly, Val, Thr, Gln and Met. May mediate sodium-independent transport of cationic amino acids, such as Arg and Lys. Amino acid uptake is pH-dependent, with low transport activities at pH 6.5, intermediate at pH 7.0 and highest between pH 7.5 and 8.5.

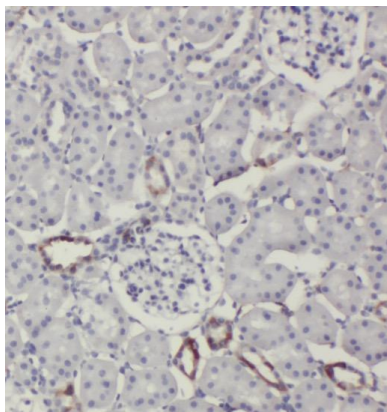
Immunogen information

Immunogen:	solute carrier family 38, member 4
Synonyms:	Sodium-coupled neutral amino acid transporter 4 Amino acid transporter A3 Na(+)-coupled neutral amino acid transporter 4 Solute carrier family 38 member 4 System A amino acid transporter 3 System N amino acid transporter 3 SLC38A4 ATA3 NAT3 SNAT4
Observed MW:	61 kDa
Uniprot ID :	Q969I6

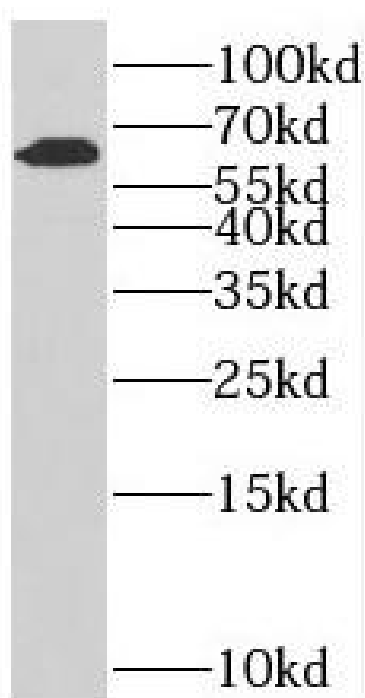
Application

Reactivity:	Human
Tested Application:	ELISA, WB, IHC
Recommended dilution:	WB: 1:500-1:2000; IHC: 1:20-1:200

Image:



Immunohistochemistry of paraffin-embedded human kidney using FNab07961(SLC38A4 antibody) at dilution of 1:50



L02 cells were subjected to SDS PAGE followed by western blot with FNab07961(SLC38A4 antibody) at dilution of 1:200