

SLC38A1 antibody

Product Information

Catalog No.:	FNab07959
Size:	100µg
Form:	liquid
Purification:	Immunogen affinity purified
Purity:	≥95% as determined by SDS-PAGE
Host:	Rabbit
Clonality:	polyclonal
Clone ID:	None
IsoType:	IgG
Storage:	PBS with 0.02% sodium azide and 50% glycerol pH 7.3, -20°C for 12 months(Avoid repeated freeze / thaw cycles.)

Background

Functions as a sodium-dependent amino acid transporter. Mediates the saturable, pH-sensitive and electrogenic cotransport of glutamine and sodium ions with a stoichiometry of 1:1. May also transport small zwitterionic and aliphatic amino acids with a lower affinity. May supply glutamatergic and GABAergic neurons with glutamine which is required for the synthesis of the neurotransmitters glutamate and GABA.

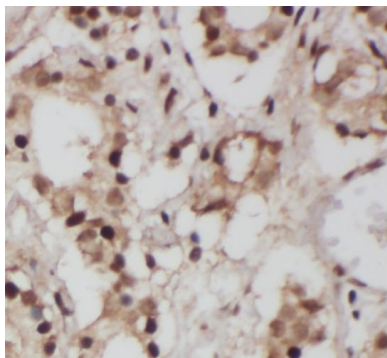
Immunogen information

Immunogen:	solute carrier family 38, member 1
Synonyms:	Sodium-coupled neutral amino acid symporter 1 Amino acid transporter A1 N-system amino acid transporter 2 Solute carrier family 38 member 1 System A amino acid transporter 1 System N amino acid transporter 1 SLC38A1 ATA1 NAT2 SAT1 SNAT1
Observed MW:	60-65 kDa
Uniprot ID :	Q9H2H9

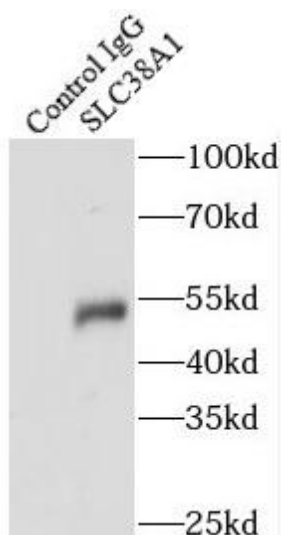
Application

Reactivity:	Human, Mouse, Rat
Tested Application:	ELISA, WB, IHC, IP
Recommended dilution:	WB: 1:500-1:2000; IP: 1:200-1:1000; IHC: 1:20-1:200

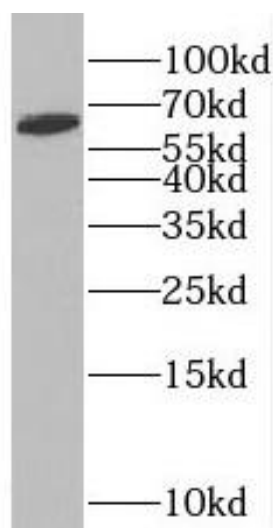
Image:



Immunohistochemistry of paraffin-embedded human prostate cancer using FNab07959(SLC38A1 antibody) at dilution of 1:50



IP Result of anti-SLC38A1 (IP:FNab07959, 4ug; Detection:FNab07959 1:500) with mouse brain tissue lysate 4000ug.



Jurkat cells were subjected to SDS PAGE followed by western blot with FNab07959(SLC38A1 antibody) at dilution of 1:500