

SLC37A4 antibody

Product Information

Catalog No.:	FNab07958
Size:	100µg
Form:	liquid
Purification:	Immunogen affinity purified
Purity:	≥95% as determined by SDS-PAGE
Host:	Rabbit
Clonality:	polyclonal
Clone ID:	None
IsoType:	IgG
Storage:	PBS with 0.02% sodium azide and 50% glycerol pH 7.3, -20°C for 12 months(Avoid repeated freeze / thaw cycles.)

Background

Inorganic phosphate and glucose-6-phosphate antiporter of the endoplasmic reticulum. Transports cytoplasmic glucose-6-phosphate into the lumen of the endoplasmic reticulum and translocates inorganic phosphate into the opposite direction. Forms with glucose-6-phosphatase the complex responsible for glucose production through glycogenolysis and gluconeogenesis. Hence, it plays a central role in homeostatic regulation of blood glucose levels.

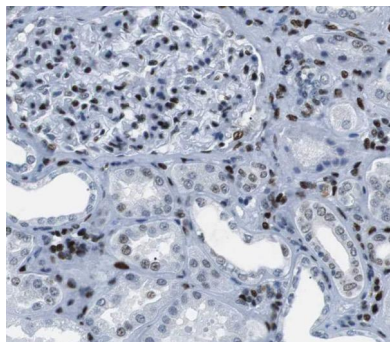
Immunogen information

Immunogen:	solute carrier family 37(glucose-6-phosphate transporter), member 4
Synonyms:	Glucose-6-phosphate exchanger SLC37A4 Glucose-5-phosphate transporter Glucose-6-phosphate translocase Solute carrier family 37 member 4 Transformation-related gene 19 protein (TRG-19) SLC37A4 G6PT G6PT1
Observed MW:	46 kDa
Uniprot ID :	O43826

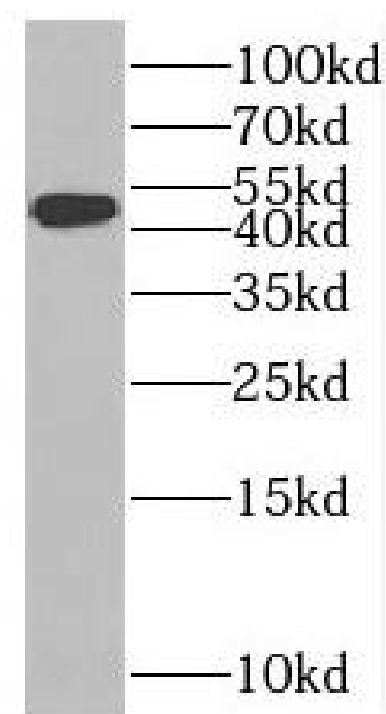
Application

Reactivity:	Human, Mouse, Rat
Tested Application:	ELISA, WB, IHC
Recommended dilution:	WB: 1:500-1:2000; IHC: 1:20-1:200

Image:



Immunohistochemistry of paraffin-embedded human kidney using FNab07958(SLC37A4 antibody) at dilution of 1:50



mouse liver tissue were subjected to SDS PAGE followed by western blot with FNab07958(SLC37A4 Antibody) at dilution of 1:1000