

SLC25A25 antibody

Product Information

Catalog No.:	FNab07938
Size:	100µg
Form:	liquid
Purification:	Immunogen affinity purified
Purity:	≥95% as determined by SDS-PAGE
Host:	Rabbit
Clonality:	polyclonal
Clone ID:	None
IsoType:	IgG
Storage:	PBS with 0.02% sodium azide and 50% glycerol pH 7.3, -20°C for 12 months(Avoid repeated freeze / thaw cycles.)

Background

Calcium-dependent mitochondrial solute carrier. Mitochondrial solute carriers shuttle metabolites, nucleotides, and cofactors through the mitochondrial inner membrane. May act as a ATP-Mg/Pi exchanger that mediates the transport of Mg-ATP in exchange for phosphate, catalyzing the net uptake or efflux of adenine nucleotides into or from the mitochondria.

Immunogen information

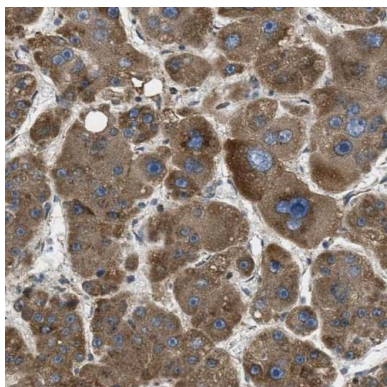
Immunogen:	solute carrier family 25(mitochondrial carrier; phosphate carrier), member 25
Synonyms:	Mitochondrial adenyl nucleotide antiporter SLC25A25 Mitochondrial ATP-Mg/Pi carrier protein 3 Mitochondrial Ca(2+)-dependent solute carrier protein 3 Short calcium-binding mitochondrial carrier protein 2 (SCaMC-2) Solute carrier family 25 member 25 SLC25A25 APC3 KIAA1896 MCSC3 SCAMC2
Observed MW:	50 kDa, 100 kDa
Uniprot ID :	Q6KCM7

Application

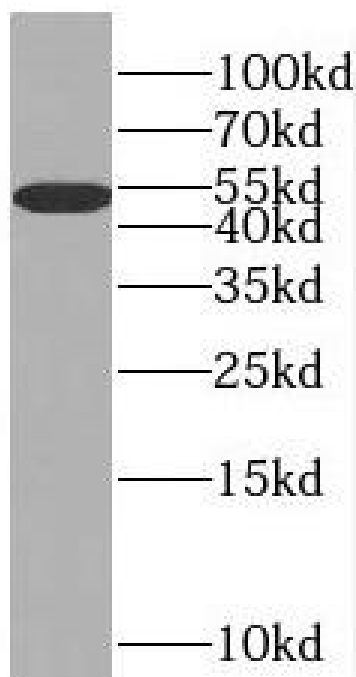
Reactivity:	Human, Mouse, Rat
Tested Application:	ELISA, WB, IHC

Recommended dilution: WB: 1:500-1:2000; IHC: 1:20-1:200

Image:



Immunohistochemistry of paraffin-embedded human liver using FNab07938(SLC25A25 antibody) at dilution of 1:50



RAW264.7 cells were subjected to SDS PAGE followed by western blot with FNab07938(SLC25A25 antibody) at dilution of 1:500