

## SLC25A1 antibody

### Product Information

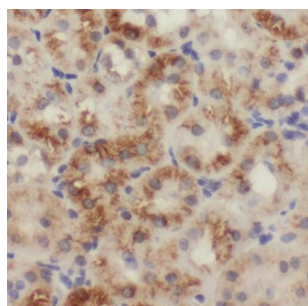
Catalog No.:	FNab07927
Size:	100µg
Form:	liquid
Purification:	Immunogen affinity purified
Purity:	≥95% as determined by SDS-PAGE
Host:	Rabbit
Clonality:	polyclonal
IsoType:	IgG
Storage:	PBS with 0.02% sodium azide and 50% glycerol pH 7.3, -20°C for 12 months(Avoid repeated freeze / thaw cycles.)

### Immunogen information

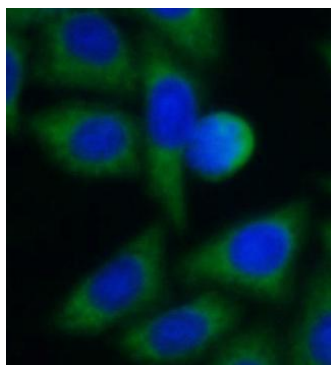
Immunogen:	solute carrier family 25(mitochondrial carrier; citrate transporter), member 1
Synonyms:	Tricarboxylate transport protein, mitochondrial Citrate transport protein (CTP) Mitochondrial citrate carrier (CIC) Solute carrier family 25 member 1 Tricarboxylate carrier protein SLC25A1 SLC20A3
Observed MW:	34 kDa
Uniprot ID :	P53007

### Application

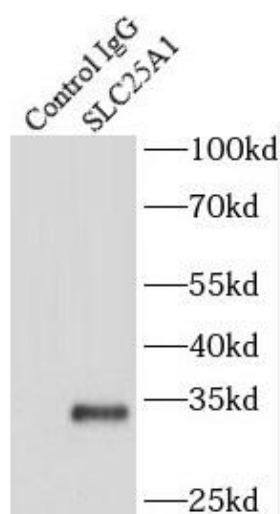
Reactivity:	Human, Mouse, Rat
Tested Application:	ELISA, WB, IHC, IF, IP
Recommended dilution:	WB: 1:500-1:2000; IP: 1:500-1:1000; IHC: 1:20-1:200; IF: 1:20-1:200
Image:	



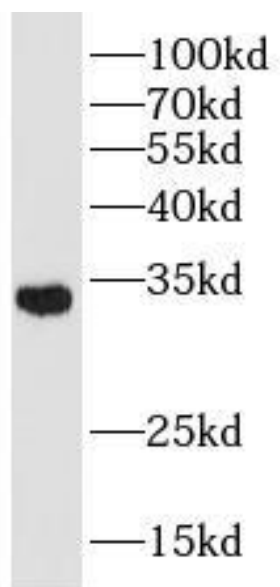
Immunohistochemistry of paraffin-embedded human kidney using FNab07927(SLC25A1 antibody) at dilution of 1:100



Immunofluorescent analysis of HepG2 cells using FNab07927 (SLC25A1 antibody) at dilution of 1:25 and Alexa Fluor 488-conjugated Goat Anti-Rabbit IgG(H+L)



IP Result of anti-SLC25A1 (IP:FNab07927, 2ug; Detection:FNab07927 1:500) with HeLa cells lysate 2000ug.



HeLa cells were subjected to SDS PAGE followed by western blot with FNab07927(SLC25A1 antibody) at dilution of 1:1000