

## SLC24A4 antibody

### Product Information

Catalog No.:	FNab07925
Size:	100µg
Form:	liquid
Purification:	Immunogen affinity purified
Purity:	≥95% as determined by SDS-PAGE
Host:	Rabbit
Clonality:	polyclonal
Clone ID:	None
IsoType:	IgG
Storage:	PBS with 0.02% sodium azide and 50% glycerol pH 7.3, -20°C for 12 months(Avoid repeated freeze / thaw cycles.)

### Background

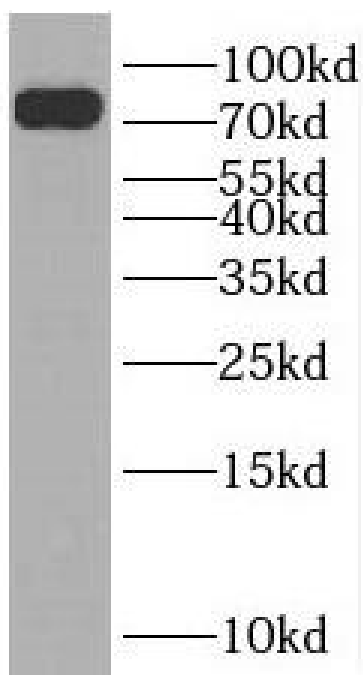
Transports 1 Ca(2+) and 1 K(+) in exchange for 4 Na(+). Controls the rapid response termination and proper regulation of adaptation in olfactory sensory neurons(OSNs) which subsequently influences how odor information is encoded and perceived. May play a role in calcium transport during amelogenesis(By similarity).

### Immunogen information

Immunogen:	solute carrier family 24(sodium/potassium/calcium exchanger), member 4
Synonyms:	Sodium/potassium/calcium exchanger 4 Na(+)/K(+)/Ca(2+)-exchange protein 4 Solute carrier family 24 member 4 SLC24A4 NCKX4
Observed MW:	62-90 kDa
Uniprot ID :	Q8NFF2

### Application

Reactivity:	Human, Mouse
Tested Application:	ELISA, WB
Recommended dilution: WB:	1:500-1:2000
Image:	



HeLa cells were subjected to SDS PAGE followed by western blot with FNab07925(SLC24A4 antibody) at dilution of 1:1000