

## SLC22A2 antibody

### Product Information

Catalog No.:	FNab07923
Size:	100µg
Form:	liquid
Purification:	Immunogen affinity purified
Purity:	≥95% as determined by SDS-PAGE
Host:	Rabbit
Clonality:	polyclonal
Clone ID:	None
IsoType:	IgG
Storage:	PBS with 0.02% sodium azide and 50% glycerol pH 7.3, -20°C for 12 months(Avoid repeated freeze / thaw cycles.)

### Background

Mediates tubular uptake of organic compounds from circulation. Mediates the influx of agmatine, dopamine, noradrenaline(norepinephrine), serotonin, choline, famotidine, ranitidine, histamin, creatinine, amantadine, memantine, acriflavine, 4-[4-(dimethylamino)-styryl]-N-methylpyridinium ASP, amiloride, metformin, N-1-methylnicotinamide(NMN), tetraethylammonium(TEA), 1-methyl-4-phenylpyridinium(MPP), cimetidine, cisplatin and oxaliplatin. Cisplatin may develop a nephrotoxic action. Transport of creatinine is inhibited by fluoroquinolones such as DX-619 and LVFX. This transporter is a major determinant of the anticancer activity of oxaliplatin and may contribute to antitumor specificity.

### Immunogen information

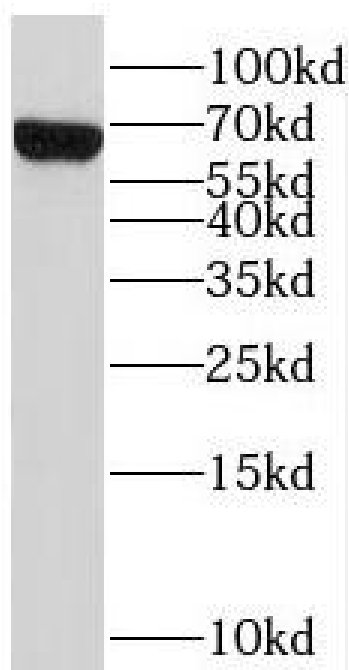
Immunogen:	solute carrier family 22(organic cation transporter), member 2
Synonyms:	Solute carrier family 22 member 2 Organic cation transporter 2 (hOCT2) SLC22A2 45567
Observed MW:	60-70 kDa
Uniprot ID :	O15244

### Application

Reactivity:	Human, Mouse, Rat
Tested Application:	ELISA, WB

Recommended dilution: WB: 1:500-1:2000

Image:



mouse kidney tissue were subjected to SDS PAGE followed by western blot with FNab07923(SLC22A2 antibody) at dilution of 1:300