

SLC22A18 antibody

Product Information

Catalog No.:	FNab07921
Size:	100µg
Form:	liquid
Purification:	Immunogen affinity purified
Purity:	≥95% as determined by SDS-PAGE
Host:	Rabbit
Clonality:	polyclonal
Clone ID:	None
IsoType:	IgG
Storage:	PBS with 0.02% sodium azide and 50% glycerol pH 7.3, -20°C for 12 months(Avoid repeated freeze / thaw cycles.)

Background

May act as a transporter of organic cations based on a proton efflux antiport mechanism. May play a role in the transport of chloroquine and quinidine-related compounds in kidney.

Immunogen information

Immunogen:	solute carrier family 22, member 18
Synonyms:	Solute carrier family 22 member 18 Beckwith-Wiedemann syndrome chromosomal region 1 candidate gene A protein Efflux transporter-like protein Imprinted multi-membrane-spanning polyspecific transporter-related protein 1 Organic cation transporter-like protein 2 (ORCTL-2) Solute carrier family 22 member 1-like Tumor-suppressing STF cDNA 5 protein Tumor-suppressing subchromosomal transferable fragment candidate gene 5 protein p45-Beckwith-Wiedemann region 1 A (p45-BWR1A) SLC22A18 BWR1A BWSCR1A HET IMPT1 ITM ORCTL2 SLC22A1L TSSC5
Observed MW:	40-50 kDa
Uniprot ID :	Q96BI1

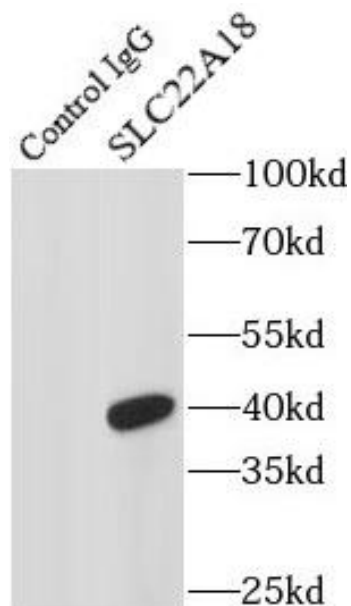
Application

Reactivity:	Human, Mouse, Rat
-------------	-------------------

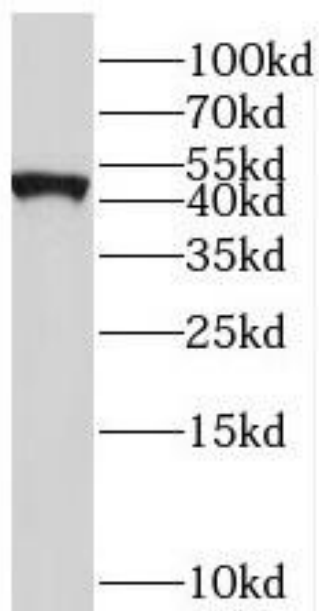
Tested Application: ELISA, WB, IP

Recommended dilution: WB: 1:500-1:2000; IP: 1:200-1:2000

Image:



IP Result of anti-SLC22A18 (IP:FNab07921, 4ug; Detection:FNab07921 1:600) with mouse brain tissue lysate 4000ug.



mouse brain tissue were subjected to SDS PAGE followed by western blot with FNab07921(SLC22A18 antibody) at dilution of 1:1000