

## SLC20A1 antibody

### Product Information

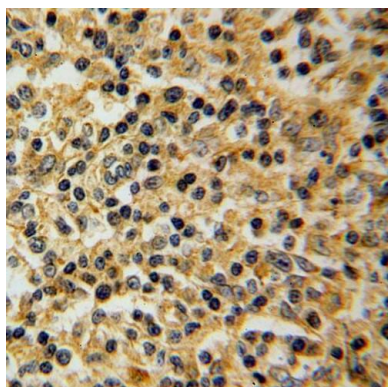
Catalog No.:	FNab07917
Size:	100µg
Form:	liquid
Purification:	Immunogen affinity purified
Purity:	≥95% as determined by SDS-PAGE
Host:	Rabbit
Clonality:	polyclonal
Clone ID:	None
IsoType:	IgG
Storage:	PBS with 0.02% sodium azide and 50% glycerol pH 7.3, -20°C for 12 months(Avoid repeated freeze / thaw cycles.)

### Immunogen information

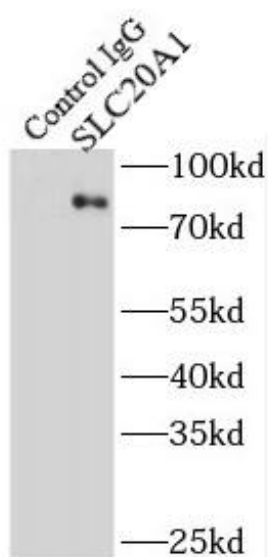
Immunogen:	solute carrier family 20(phosphate transporter), member 1
Synonyms:	Sodium-dependent phosphate transporter 1 Gibbon ape leukemia virus receptor 1 (GLVR-1) Leukemia virus receptor 1 homolog Phosphate transporter 1 (PiT-1) Solute carrier family 20 member 1 SLC20A1 GLVR1 PIT1
Observed MW:	80 kDa
Uniprot ID :	Q8WUM9

### Application

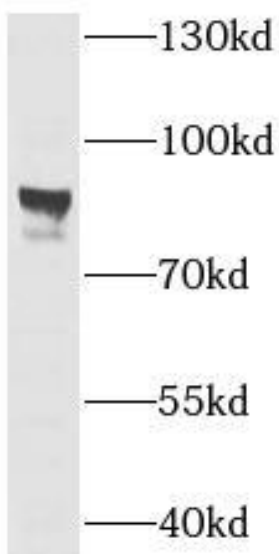
Reactivity:	Human, Mouse, Rat
Tested Application:	ELISA, WB, IHC, IP
Recommended dilution:	WB: 1:500-1:1000; IP: 1:500-1:1000; IHC: 1:20-1:200
Image:	



Immunohistochemistry of paraffin-embedded human lymphoma using FNab07917(SLC20A1 antibody) at dilution of 1:50



IP Result of anti-SLC20A1 (IP:FNab07917, 4ug; Detection:FNab07917 1:500) with HEK-293 cells lysate 2800ug.



HEK-293 cells were subjected to SDS PAGE followed by western blot with FNab07917(SLC20A1 antibody) at dilution of 1:500