

## SLC18A1 antibody

### Product Information

Catalog No.:	FNab07914
Size:	100µg
Form:	liquid
Purification:	Immunogen affinity purified
Purity:	≥95% as determined by SDS-PAGE
Host:	Rabbit
Clonality:	polyclonal
Clone ID:	None
IsoType:	IgG
Storage:	PBS with 0.02% sodium azide and 50% glycerol pH 7.3, -20°C for 12 months(Avoid repeated freeze / thaw cycles.)

### Background

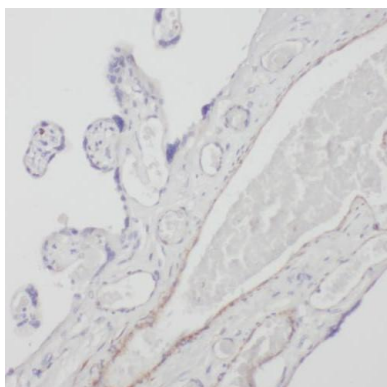
Involved in the transport of biogenic monoamines, such as serotonin, from the cytoplasm into the secretory vesicles of neuroendocrine and endocrine cells.

### Immunogen information

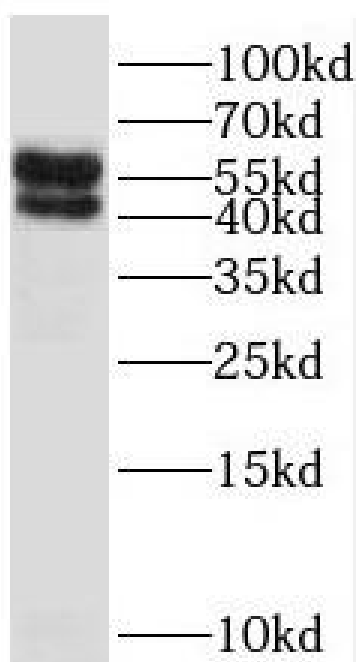
Immunogen:	solute carrier family 18(vesicular monoamine), member 1
Synonyms:	Chromaffin granule amine transporter Solute carrier family 18 member 1 Vesicular amine transporter 1 (VAT1) SLC18A1 VAT1 VMAT1
Observed MW:	50 kDa, 56 kDa
Uniprot ID :	P54219

### Application

Reactivity:	Human
Tested Application:	ELISA, WB, IHC
Recommended dilution:	WB: 1:500-1:2000; IHC: 1:20-1:200
Image:	



Immunohistochemistry of paraffin-embedded human placenta using FNab07914(SLC18A1 antibody) at dilution of 1:100



HEK-293 cells were subjected to SDS PAGE followed by western blot with FNab07914(SLC18A1 antibody) at dilution of 1:500