

SLAMF7 antibody

Product Information

Catalog No.:	FNab07903
Size:	100µg
Form:	liquid
Purification:	Immunogen affinity purified
Purity:	≥95% as determined by SDS-PAGE
Host:	Rabbit
Clonality:	polyclonal
Clone ID:	None
IsoType:	IgG
Storage:	PBS with 0.02% sodium azide and 50% glycerol pH 7.3, -20°C for 12 months(Avoid repeated freeze / thaw cycles.)

Background

Self-ligand receptor of the signaling lymphocytic activation molecule(SLAM) family. SLAM receptors triggered by homo-or heterotypic cell-cell interactions are modulating the activation and differentiation of a wide variety of immune cells and thus are involved in the regulation and interconnection of both innate and adaptive immune response. Activities are controlled by presence or absence of small cytoplasmic adapter proteins, SH2D1A/SAP and/or SH2D1B/EAT-2. Isoform 1 mediates NK cell activation through a SH2D1A-independent extracellular signal-regulated ERK-mediated pathway(PubMed:11698418). Positively regulates NK cell functions by a mechanism dependent on phosphorylated SH2D1B. Downstream signaling implicates PLCG1, PLCG2 and PI3K(PubMed:16339536). In addition to heterotypic NK cells-target cells interactions also homotypic interactions between NK cells may contribute to activation. However, in the absence of SH2D1B, inhibits NK cell function. Acts also inhibitory in T-cells(By similarity). May play a role in lymphocyte adhesion(PubMed:11802771). In LPS-activated monocytes negatively regulates production of proinflammatory cytokines(PubMed:23695528). Isoform 3 does not mediate any NK cell activation.

Immunogen information

Immunogen:	SLAM family member 7
Synonyms:	SLAM family member 7 CD2 subset 1 CD2-like receptor-activating cytotoxic cells (CRACC) Membrane protein FOAP-12 Novel Ly9 Protein 19A SLAMF7 CS1
Observed MW:	66 kDa

Uniprot ID : Q9NQ25

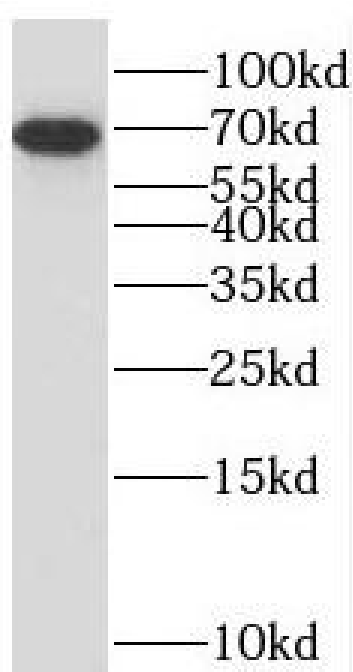
Application

Reactivity: Human

Tested Application: ELISA, WB

Recommended dilution: WB: 1:500-1:2000

Image:



Jurkat cells were subjected to SDS PAGE followed by western blot with FNab07903(SLAMF7 Antibody) at dilution of 1:600