

SKP1 antibody

Product Information

Catalog No.:	FNab07897
Size:	100µg
Form:	liquid
Purification:	Immunogen affinity purified
Purity:	≥95% as determined by SDS-PAGE
Host:	Rabbit
Clonality:	polyclonal
Clone ID:	None
IsoType:	IgG
Storage:	PBS with 0.02% sodium azide and 50% glycerol pH 7.3, -20°C for 12 months (Avoid repeated freeze / thaw cycles.)

Background

This gene encodes a component of SCF complexes, which are composed of this protein, cullin 1, a ring-box protein, and one member of the F-box family of proteins. This protein binds directly to the F-box motif found in F-box proteins. SCF complexes are involved in the regulated ubiquitination of specific protein substrates, which targets them for degradation by the proteasome. Specific F-box proteins recognize different target protein(s), and many specific SCF substrates have been identified including regulators of cell cycle progression and development. Studies have also characterized the protein as an RNA polymerase II elongation factor. Alternative splicing of this gene results in two transcript variants. A related pseudogene has been identified on chromosome 7.

Immunogen information

Immunogen:	S-phase kinase-associated protein 1
Synonyms:	S-phase kinase-associated protein 1 Cyclin-A/CDK2-associated protein p19 (p19A) Organ of Corti protein 2 (OCP-2) Organ of Corti protein II (OCP-II) RNA polymerase II elongation factor-like protein SIII Transcription elongation factor B polypeptide 1-like p19skp1 SKP1 EMC19 OCP2 SKP1A TCEB1L
Observed MW:	19 kDa
Uniprot ID :	P63208

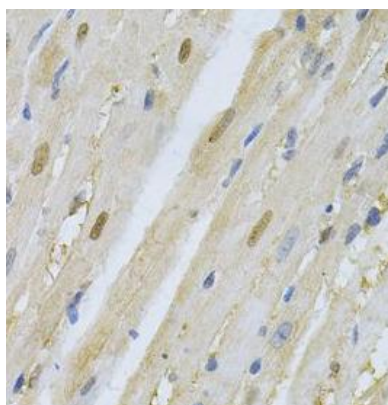
Application

Reactivity: Human, Mouse, Rat

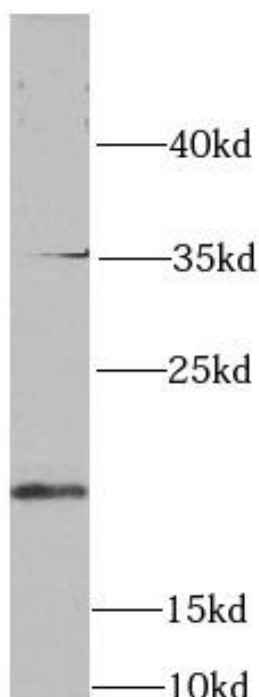
Tested Application: ELISA, WB, IHC

Recommended dilution: WB: 1:500 - 1:2000; IHC: 1:50 - 1:200

Image:



Immunohistochemistry of paraffin-embedded mouse heart using FNab07897(SKPl antibody) at dilution of 1:100



human brain tissue were subjected to SDS PAGE followed by western blot with FNab07897(SKPl antibody) at dilution of 1:1000