

SIGMAR1 antibody

Product Information

Catalog No.:	FNab07864
Size:	100µg
Form:	liquid
Purification:	Immunogen affinity purified
Purity:	≥95% as determined by SDS-PAGE
Host:	Rabbit
Clonality:	polyclonal
Clone ID:	None
IsoType:	IgG
Storage:	PBS with 0.02% sodium azide and 50% glycerol pH 7.3, -20°C for 12 months(Avoid repeated freeze / thaw cycles.)

Background

Functions in lipid transport from the endoplasmic reticulum and is involved in a wide array of cellular functions probably through regulation of the biogenesis of lipid microdomains at the plasma membrane. Involved in the regulation of different receptors it plays a role in BDNF signaling and EGF signaling. Also regulates ion channels like the potassium channel and could modulate neurotransmitter release. Plays a role in calcium signaling through modulation together with ANK2 of the ITP3R-dependent calcium efflux at the endoplasmic reticulum. Plays a role in several other cell functions including proliferation, survival and death. Originally identified for its ability to bind various psychoactive drugs it is involved in learning processes, memory and mood alteration(PubMed:16472803, PubMed:9341151). Necessary for proper mitochondrial axonal transport in motor neurons, in particular the retrograde movement of mitochondria(By similarity).

Immunogen information

Immunogen:	sigma non-opioid intracellular receptor 1
Synonyms:	Sigma non-opioid intracellular receptor 1 Aging-associated gene 8 protein SR31747-binding protein (SR-BP) Sigma 1-type opioid receptor (SIG-1R, Sigma1-receptor, Sigma1R, hSigmaR1) SIGMAR1 OPRS1 SRBP
Observed MW:	27 kDa
Uniprot ID :	Q99720

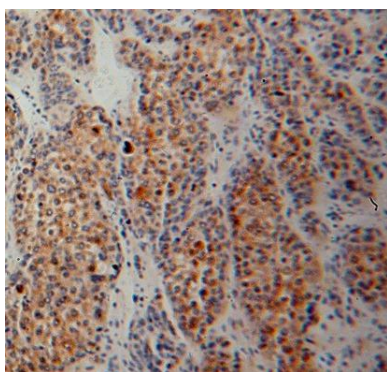
Application

Reactivity: Human, Mouse, Rat

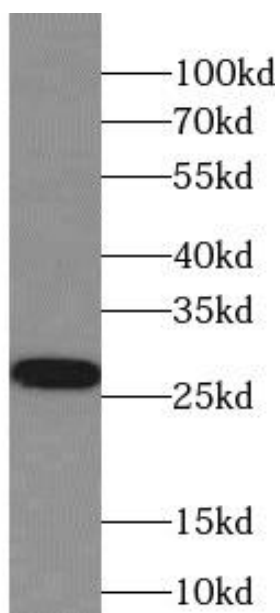
Tested Application: ELISA, WB, IHC

Recommended dilution: WB: 1:200-1:2000; IHC: 1:20-1:200

Image:



Immunohistochemistry of paraffin-embedded human liver cancer using FNab07864(SIGMAR1 antibody) at dilution of 1:50



mouse kidney tissue were subjected to SDS PAGE followed by western blot with FNab07864(SIGMAR1 antibody) at dilution of 1:500