

SHMT2 antibody

Product Information

| | |
|---------------|---|
| Catalog No.: | FNab07851 |
| Size: | 100µg |
| Form: | liquid |
| Purification: | Immunogen affinity purified |
| Purity: | ≥95% as determined by SDS-PAGE |
| Host: | Rabbit |
| Clonality: | polyclonal |
| Clone ID: | None |
| IsoType: | IgG |
| Storage: | PBS with 0.02% sodium azide and 50% glycerol pH 7.3, -20°C for 12 months (Avoid repeated freeze / thaw cycles.) |

Background

This gene encodes the mitochondrial form of a pyridoxal phosphate-dependent enzyme that catalyzes the reversible reaction of serine and tetrahydrofolate to glycine and 5, 10-methylene tetrahydrofolate. The encoded product is primarily responsible for glycine synthesis. The activity of the encoded protein has been suggested to be the primary source of intracellular glycine. The gene which encodes the cytosolic form of this enzyme is located on chromosome 17. Alternative splicing results in multiple transcript variants.

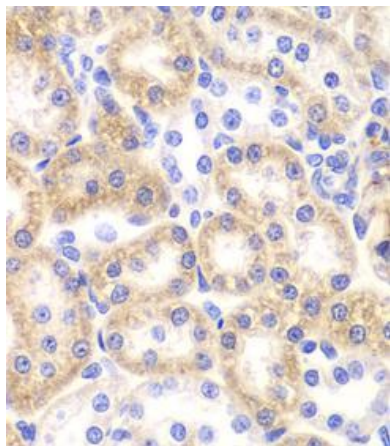
Immunogen information

| | |
|--------------|---|
| Immunogen: | serine hydroxymethyltransferase 2 (mitochondrial) |
| Synonyms: | Serine hydroxymethyltransferase, mitochondrial (SHMT) Glycine hydroxymethyltransferase Serine methylase SHMT2 |
| Observed MW: | 55 kDa |
| Uniprot ID : | P34897 |

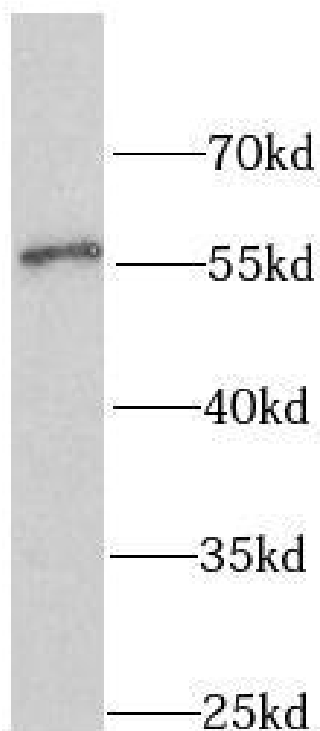
Application

| | |
|-----------------------|---|
| Reactivity: | Human, Mouse, Rat |
| Tested Application: | ELISA, WB, IHC, IF |
| Recommended dilution: | WB: 1:500 - 1:2000; IHC: 1:50 - 1:200; IF: 1:50 - 1:200 |

Image:



Immunohistochemistry of paraffin-embedded rat kidney using FNab07851(SHMT2 antibody) at dilution of 1:100



HeLa cells were subjected to SDS PAGE followed by western blot with FNab07851(SHMT2 antibody) at dilution of 1:1000