

SHF antibody

Product Information

| | |
|---------------|--|
| Catalog No.: | FNab07846 |
| Size: | 100µg |
| Form: | liquid |
| Purification: | Immunogen affinity purified |
| Purity: | ≥95% as determined by SDS-PAGE |
| Host: | Rabbit |
| Clonality: | polyclonal |
| Clone ID: | None |
| IsoType: | IgG |
| Storage: | PBS with 0.02% sodium azide and 50% glycerol pH 7.3, -20°C for 12 months(Avoid repeated freeze / thaw cycles.) |

Background

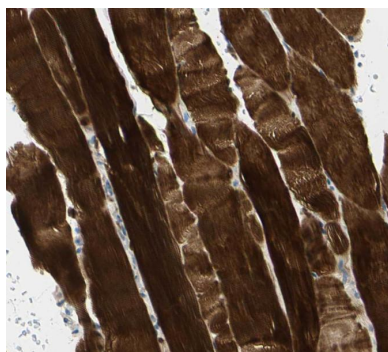
Adapter protein which may play a role in the regulation of apoptosis in response to PDGF.

Immunogen information

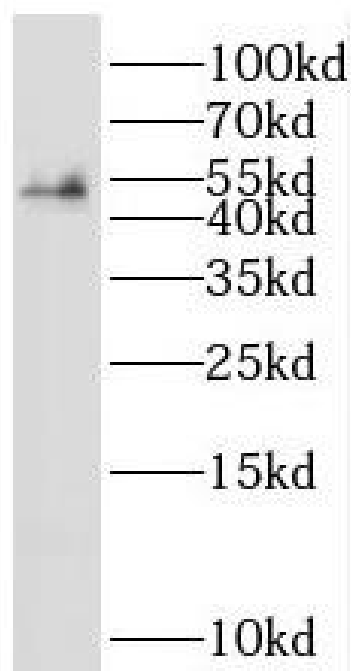
| | |
|--------------|---|
| Immunogen: | Src homology 2 domain containing F |
| Synonyms: | SH2 domain-containing adapter protein F SHF |
| Observed MW: | 46-50 kDa |
| Uniprot ID : | Q7M4L6 |

Application

| | |
|-----------------------|-----------------------------------|
| Reactivity: | Human, Mouse, Rat |
| Tested Application: | ELISA, WB, IHC |
| Recommended dilution: | WB: 1:500-1:2000; IHC: 1:20-1:200 |
| Image: | |



Immunohistochemistry of paraffin-embedded human skeletal muscle using FNab07846(SHF antibody) at dilution of 1:50



mouse skeletal muscle tissue were subjected to SDS PAGE followed by western blot with FNab07846(SHF antibody) at dilution of 1:1000