

## SHE antibody

### Product Information

Catalog No.:	FNab07845
Size:	100µg
Form:	liquid
Purification:	Immunogen affinity purified
Purity:	≥95% as determined by SDS-PAGE
Host:	Rabbit
Clonality:	polyclonal
Clone ID:	None
IsoType:	IgG
Storage:	PBS with 0.02% sodium azide and 50% glycerol pH 7.3, -20°C for 12 months(Avoid repeated freeze / thaw cycles.)

### Background

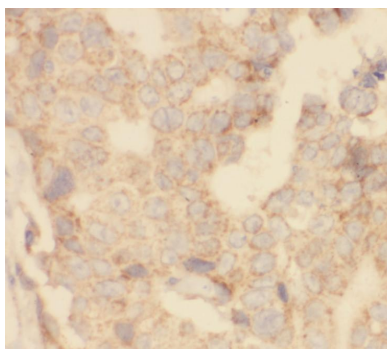
SHE, also known as SH2 domain-containing adapter protein E, is a 495 amino acid protein whose molecular weight is 54 kDa. The function of SHE remains unknown. This antibody specifically recognises the 54 kDa protein.

### Immunogen information

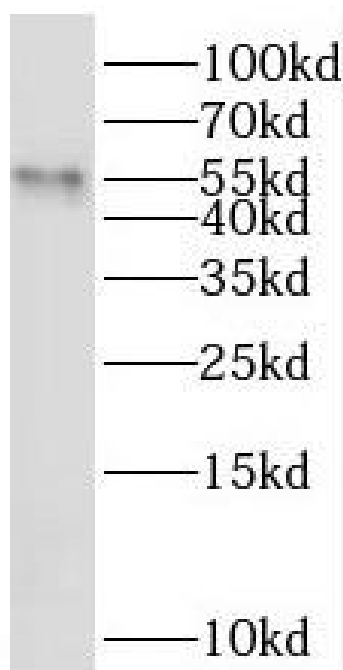
Immunogen:	Src homology 2 domain containing E
Synonyms:	SH2 domain-containing adapter protein E SHE
Observed MW:	55 kDa
Uniprot ID :	Q5VZ18

### Application

Reactivity:	Human, Mouse
Tested Application:	ELISA, IHC, WB, IF
Recommended dilution:	WB: 1:200-1:1000; IHC: 1:20-1:200; IF: 1:10-1:100
Image:	



Immunohistochemistry of paraffin-embedded human breast cancer tissue slide using FNab07845(SHE Antibody) at dilution of 1:50



mouse testis tissue were subjected to SDS PAGE followed by western blot with FNab07845(SHE Antibody) at dilution of 1:300