

SH2D1A antibody

Product Information

Catalog No.:	FNab07819
Size:	100µg
Form:	liquid
Purification:	Immunogen affinity purified
Purity:	≥95% as determined by SDS-PAGE
Host:	Rabbit
Clonality:	polyclonal
Clone ID:	None
IsoType:	IgG
Storage:	PBS with 0.02% sodium azide and 50% glycerol pH 7.3, -20°C for 12 months (Avoid repeated freeze / thaw cycles.)

Background

This gene encodes a protein that plays a major role in the bidirectional stimulation of T and B cells. This protein contains an SH2 domain and a short tail. It associates with the signaling lymphocyte-activation molecule, thereby acting as an inhibitor of this transmembrane protein by blocking the recruitment of the SH2-domain-containing signal-transduction molecule SHP-2 to its docking site. This protein can also bind to other related surface molecules that are expressed on activated T, B and NK cells, thereby modifying signal transduction pathways in these cells. Mutations in this gene cause lymphoproliferative syndrome X-linked type 1 or Duncan disease, a rare immunodeficiency characterized by extreme susceptibility to infection with Epstein-Barr virus, with symptoms including severe mononucleosis and malignant lymphoma. Multiple transcript variants encoding different isoforms have been found for this gene.

Immunogen information

Immunogen:	SH2 domain protein 1A
Synonyms:	SH2 domain-containing protein 1A Duncan disease SH2-protein Signaling lymphocytic activation molecule-associated protein (SLAM-associated protein) T-cell signal transduction molecule SAP SH2D1A DSHP SAP
Observed MW:	17 kDa
Uniprot ID :	O60880

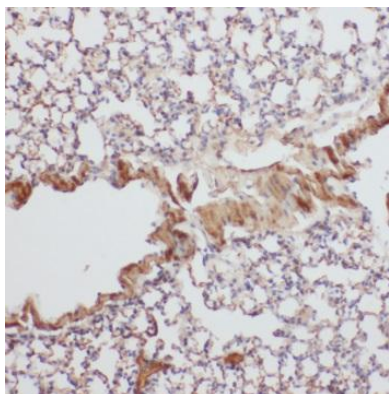
Application

Reactivity: Human, Mouse, Rat

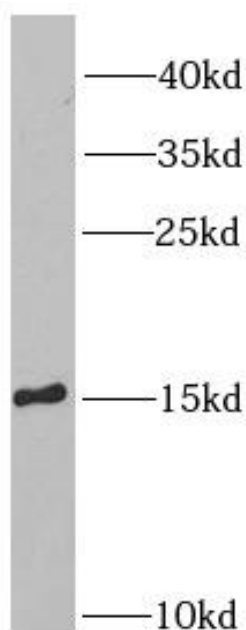
Tested Application: ELISA, WB, IHC

Recommended dilution: WB: 1:500 - 1:2000; IHC: 1:50 - 1:200

Image:



Immunohistochemistry of paraffin-embedded human lung using FNab07819(SH2D1A antibody) at dilution of 1:100



Jurkat cells were subjected to SDS PAGE followed by western blot with FNab07819(SH2D1A antibody) at dilution of 1:1000