

## SH2B1 antibody

### Product Information

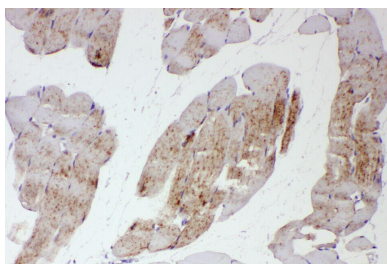
Catalog No.:	FNab07818
Size:	100µg
Form:	liquid
Purification:	Immunogen affinity purified
Purity:	≥95% as determined by SDS-PAGE
Host:	Rabbit
Clonality:	polyclonal
Clone ID:	None
IsoType:	IgG
Storage:	PBS with 0.02% sodium azide and 50% glycerol pH 7.3, -20°C for 12 months(Avoid repeated freeze / thaw cycles.)

### Immunogen information

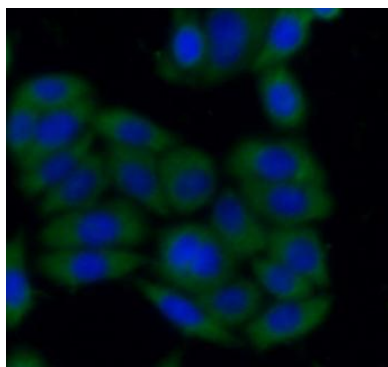
Immunogen:	SH2B adaptor protein 1
Synonyms:	SH2B adapter protein 1 Pro-rich, PH and SH2 domain-containing signaling mediator (PSM) SH2 domain-containing protein 1B SH2B1 KIAA1299 SH2B
Observed MW:	None
Uniprot ID :	Q9NRF2

### Application

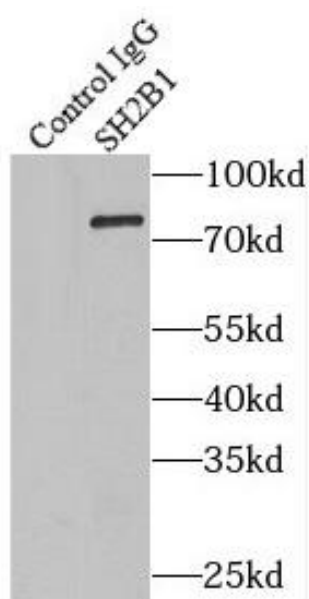
Reactivity:	Human
Tested Application:	ELISA, WB, IP, IHC, IF
Recommended dilution:	WB: 1:200-1:2000; IP: 1:200-1:2000; IHC: 1:20-1:200; IF: 1:20-1:200
Image:	



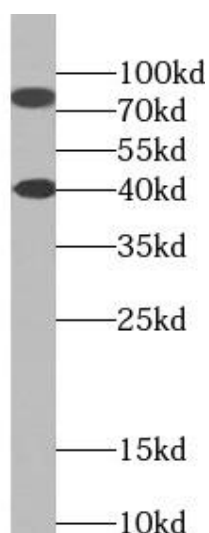
Immunohistochemistry of paraffin-embedded human skeletal muscle tissue slide using FNab07818(SH2B1 Antibody) at dilution of 1:50



Immunofluorescent analysis of HeLa cells using FNab07818( SH2B1 Antibody) at dilution of 1:50 and Alexa Fluor 488-conjugated AffiniPure Goat Anti-Rabbit IgG(H+L)



IP Result of anti-SH2B1 (IP:FNab07818, 4ug; Detection:FNab07818 1:600) with HEK-293 cells lysate 3000ug.



HEK-293 cells were subjected to SDS PAGE followed by western blot with FNab07818(SH2B1 Antibody) at dilution of 1:600