

SLC5A4 antibody

Product Information

| | |
|---------------|--|
| Catalog No.: | FNab07810 |
| Size: | 100µg |
| Form: | liquid |
| Purification: | Immunogen affinity purified |
| Purity: | ≥95% as determined by SDS-PAGE |
| Host: | Rabbit |
| Clonality: | polyclonal |
| Clone ID: | None |
| IsoType: | IgG |
| Storage: | PBS with 0.02% sodium azide and 50% glycerol pH 7.3, -20°C for 12 months(Avoid repeated freeze / thaw cycles.) |

Background

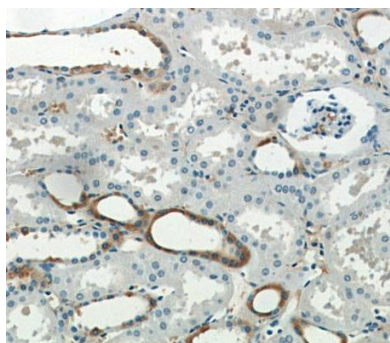
None

Immunogen information

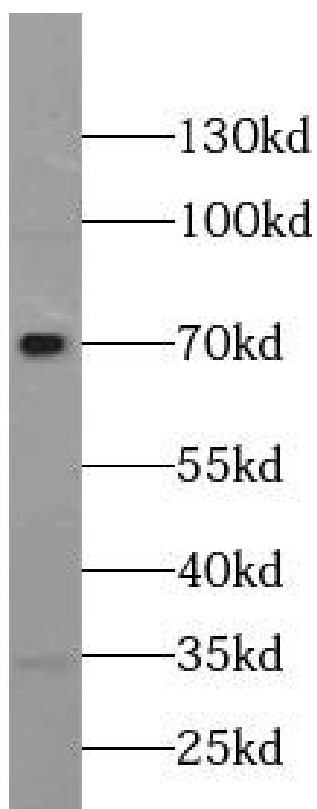
| | |
|--------------|--|
| Immunogen: | solute carrier family 5(low affinity glucose cotransporter), member 4 |
| Synonyms: | Probable glucose sensor protein SLC5A4 Solute carrier family 5 member 4 SLC5A4 SAAT1 SGLT3 |
| Observed MW: | 70 kDa |
| Uniprot ID : | Q9NY91 |

Application

| | |
|-----------------------|---|
| Reactivity: | Human, Mouse, Rat |
| Tested Application: | ELISA, WB, IHC |
| Recommended dilution: | WB: 1:500-1:5000; IP: 1:200-1:2000; IHC: 1:20-1:200 |
| Image: | |



Immunohistochemistry of paraffin-embedded human kidney slide using FNab07810(SLC5A4 Antibody) at dilution of 1:50



mouse kidney tissue were subjected to SDS PAGE followed by western blot with FNab07810(SLC5A4 Antibody) at dilution of 1:1000