

SFPQ antibody

Product Information

| | |
|---------------|---|
| Catalog No.: | FNab07785 |
| Size: | 100µg |
| Form: | liquid |
| Purification: | Immunogen affinity purified |
| Purity: | ≥95% as determined by SDS-PAGE |
| Host: | Rabbit |
| Clonality: | polyclonal |
| Clone ID: | None |
| IsoType: | IgG |
| Storage: | PBS with 0.02% sodium azide and 50% glycerol pH 7.3, -20°C for 12 months (Avoid repeated freeze / thaw cycles.) |

Background

SFPQ, also named PSF, encodes a nuclear factor implicated in the splicing and regulation of gene expression. SFPQ probably forms a heteromer with NONO and participates in DNA pairing and DNA break repair program. Very recently SFPQ was identified as a downstream target of tau, complete nuclear depletion and cytoplasmic accumulation of SFPQ were shown in the neurons and astrocytes of brains with Alzheimer's disease (AD), more strikingly, reduced SFPQ levels may progress together with tau pathology, these observation strongly suggests the important role of SFPQ pathology in neurodegenerative diseases including AD. SFPQ protein may appears as 47 kDa, 52 kDa or 100 kDa molecules in various cell types. This antibody is a rabbit polyclonal antibody raised against the N-terminal of human SFPQ.

Immunogen information

| | |
|--------------|--|
| Immunogen: | splicing factor proline/glutamine-rich (polypyrimidine tract binding protein associated) |
| Synonyms: | Splicing factor, proline- and glutamine-rich 100 kDa DNA-pairing protein (hPOMp100) DNA-binding p52/p100 complex, 100 kDa subunit Polypyrimidine tract-binding protein-associated-splicing factor (PSF, PTB-associated-splicing factor) SFPQ PSF |
| Observed MW: | 115 kDa |
| Uniprot ID : | P23246 |

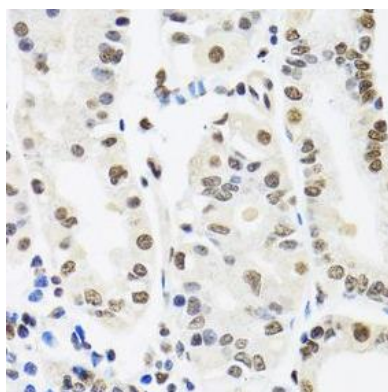
Application

Reactivity: Human, Mouse, Rat

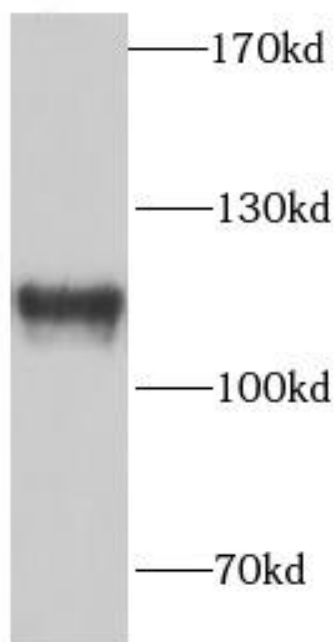
Tested Application: ELISA, WB, IHC

Recommended dilution: WB: 1:500 - 1:1000; IHC: 1:50 - 1:200

Image:



Immunohistochemistry of paraffin-embedded human stomach using FNab07785(SFPQ antibody) at dilution of 1:50



HeLa cells were subjected to SDS PAGE followed by western blot with FNab07785(SFPQ antibody) at dilution of 1:1000