

SERP1 antibody

Product Information

Catalog No.:	FNab07738
Size:	100µg
Form:	liquid
Purification:	Immunogen affinity purified
Purity:	≥95% as determined by SDS-PAGE
Host:	Rabbit
Clonality:	polyclonal
Clone ID:	None
IsoType:	IgG
Storage:	PBS with 0.02% sodium azide and 50% glycerol pH 7.3, -20°C for 12 months(Avoid repeated freeze / thaw cycles.)

Background

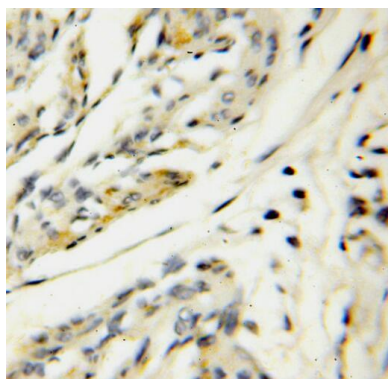
Interacts with target proteins during their translocation into the lumen of the endoplasmic reticulum. Protects unfolded target proteins against degradation during ER stress. May facilitate glycosylation of target proteins after termination of ER stress. May modulate the use of N-glycosylation sites on target proteins(By similarity).

Immunogen information

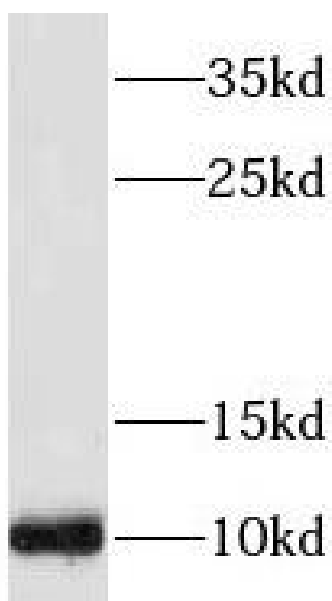
Immunogen:	stress-associated endoplasmic reticulum protein 1
Synonyms:	Stress-associated endoplasmic reticulum protein 1 Ribosome-attached membrane protein 4 SERP1 RAMP4
Observed MW:	10 kDa
Uniprot ID :	Q9Y6X1

Application

Reactivity:	Human, Mouse, Rat
Tested Application:	ELISA, WB, IHC
Recommended dilution:	WB: 1:500-1:2000; IHC: 1:20-1:200
Image:	



Immunohistochemistry of paraffin-embedded human endometrial cancer using FNaB07738(SERP1 antibody) at dilution of 1:100



mouse brain tissue were subjected to SDS PAGE followed by western blot with FNaB07738(SERP1 antibody) at dilution of 1:500