

SERINC1 antibody

Product Information

Catalog No.:	FNab07735
Size:	100µg
Form:	liquid
Purification:	Immunogen affinity purified
Purity:	≥95% as determined by SDS-PAGE
Host:	Rabbit
Clonality:	polyclonal
Clone ID:	None
IsoType:	IgG
Storage:	PBS with 0.02% sodium azide and 50% glycerol pH 7.3, -20°C for 12 months(Avoid repeated freeze / thaw cycles.)

Background

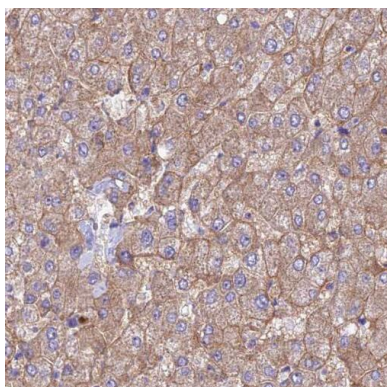
Enhances the incorporation of serine into phosphatidylserine and sphingolipids.

Immunogen information

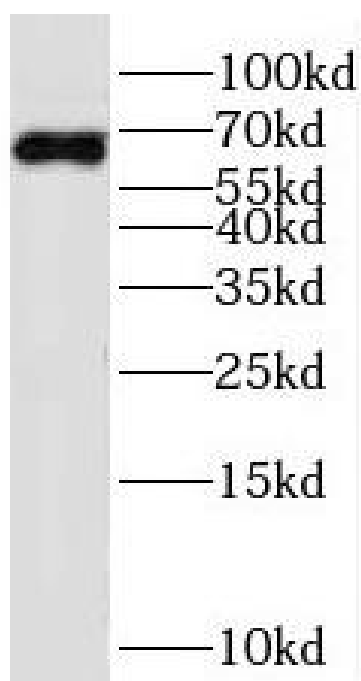
Immunogen:	serine incorporator 1
Synonyms:	Serine incorporator 1 Tumor differentially expressed protein 1-like Tumor differentially expressed protein 2 SERINC1 KIAA1253 TDE1L TDE2
Observed MW:	65 kDa
Uniprot ID :	Q9NRX5

Application

Reactivity:	Human
Tested Application:	ELISA, WB, IHC
Recommended dilution:	WB: 1:500-1:2000; IHC: 1:20-1:200
Image:	



Immunohistochemistry of paraffin-embedded human liver cancer using FNab07735(SERINC1 antibody) at dilution of 1:50



HeLa cells were subjected to SDS PAGE followed by western blot with FNab07735(SERINC1 antibody) at dilution of 1:100