

## ATP2A2 antibody

### Product Information

Catalog No.:	FNab07732
Size:	100µg
Form:	liquid
Purification:	Immunogen affinity purified
Purity:	≥95% as determined by SDS-PAGE
Host:	Rabbit
Clonality:	polyclonal
Clone ID:	None
IsoType:	IgG
Storage:	PBS with 0.02% sodium azide and 50% glycerol pH 7.3, -20°C for 12 months(Avoid repeated freeze / thaw cycles.)

### Background

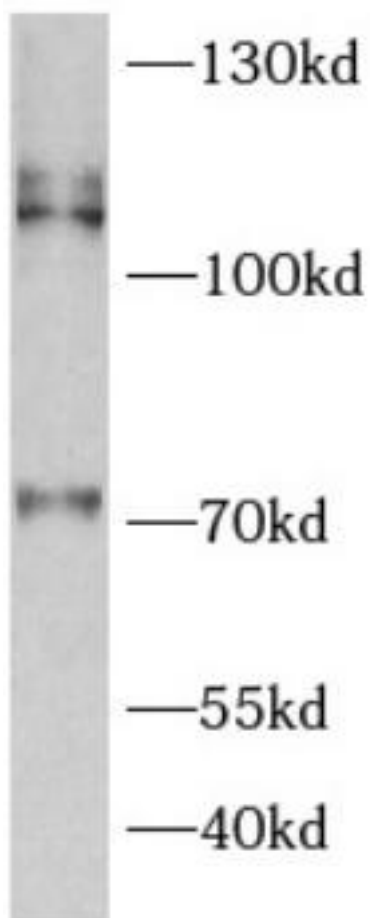
None

### Immunogen information

Immunogen:	ATPase, Ca <sup>++</sup> transporting, cardiac muscle, slow twitch 2
Synonyms:	Sarcoplasmic/endoplasmic reticulum calcium ATPase 2 (SERCA2, SR Ca(2+)-ATPase 2) Calcium pump 2 Calcium-transporting ATPase sarcoplasmic reticulum type, slow twitch skeletal muscle isoform Endoplasmic reticulum class 1/2 Ca(2+) ATPase ATP2A2 ATP2B
Observed MW:	115 kDa
Uniprot ID :	P16615

### Application

Reactivity:	Human, Mouse, Rat
Tested Application:	ELISA, WB
Recommended dilution:	WB: 1:500-1:2000
Image:	



Hela cells were subjected to SDS PAGE followed by western blot with FNab07732(SERCA2 Antibody) at dilution of 1:1000