

SEC61A1 antibody

Product Information

Catalog No.:	FNab07687
Size:	100µg
Form:	liquid
Purification:	Immunogen affinity purified
Purity:	≥95% as determined by SDS-PAGE
Host:	Rabbit
Clonality:	polyclonal
Clone ID:	None
IsoType:	IgG
Storage:	PBS with 0.02% sodium azide and 50% glycerol pH 7.3, -20°C for 12 months(Avoid repeated freeze / thaw cycles.)

Background

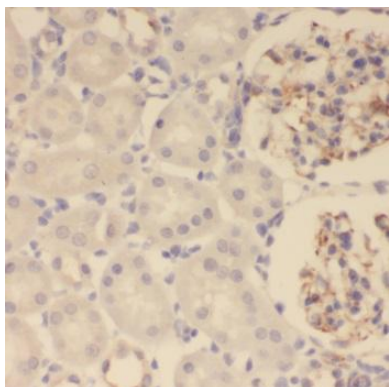
The SEC61 complex is a major component of the endoplasmic reticulum(ER) translocation site(PMID: 7720858). This complex is composed of three subunits: SEC61alpha, SEC61beta and SEC61gamma. SEC61alpha is a polytopic integral membrane protein. It is a core component of the ER translocation complex, playing a crucial role in the insertion of secretory and membrane polypeptides into the ER.

Immunogen information

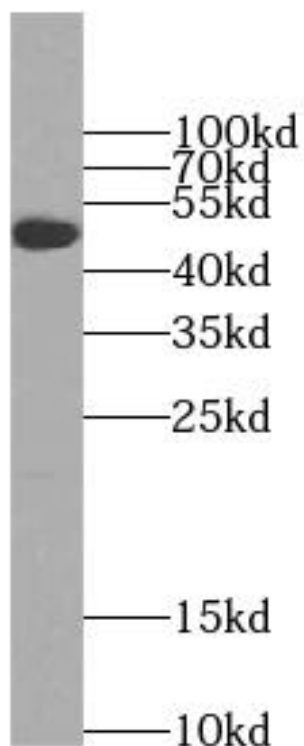
Immunogen:	Sec61 alpha 1 subunit
Synonyms:	Protein transport protein Sec61 subunit alpha isoform 1 (Sec61 alpha-1) SEC61A1 SEC61A
Observed MW:	52 kDa
Uniprot ID :	P61619

Application

Reactivity:	Human, Mouse, Rat
Tested Application:	ELISA, WB, IHC, IF
Recommended dilution:	WB: 1:200-1:2000; IF: 1:10-1:100
Image:	



Immunohistochemistry of paraffin-embedded human kidney using FNab07687(SEC61α antibody) at dilution of 1:100



mouse brain tissue were subjected to SDS PAGE followed by western blot with FNab07687(SEC61A2 Antibody) at dilution of 1:600