

## SCP2 antibody

### Product Information

Catalog No.:	FNab07652
Size:	100µg
Form:	liquid
Purification:	Immunogen affinity purified
Purity:	≥95% as determined by SDS-PAGE
Host:	Rabbit
Clonality:	polyclonal
Clone ID:	None
IsoType:	IgG
Storage:	PBS with 0.02% sodium azide and 50% glycerol pH 7.3, -20°C for 12 months (Avoid repeated freeze / thaw cycles.)

### Background

This gene encodes two proteins: sterol carrier protein X (SCPx) and sterol carrier protein 2 (SCP2), as a result of transcription initiation from 2 independently regulated promoters. The transcript initiated from the proximal promoter encodes the longer SCPx protein, and the transcript initiated from the distal promoter encodes the shorter SCP2 protein, with the 2 proteins sharing a common C-terminus. Evidence suggests that the SCPx protein is a peroxisome-associated thiolase that is involved in the oxidation of branched chain fatty acids, while the SCP2 protein is thought to be an intracellular lipid transfer protein. This gene is highly expressed in organs involved in lipid metabolism, and may play a role in Zellweger syndrome, in which cells are deficient in peroxisomes and have impaired bile acid synthesis. Alternative splicing of this gene produces multiple transcript variants, some encoding different isoforms.

### Immunogen information

Immunogen:	sterol carrier protein 2
Synonyms:	Sterol carrier protein 2 (SCP-2) Acetyl-CoA C-myristoyltransferase Non-specific lipid-transfer protein (NSL-TP) Propanoyl-CoA C-acyltransferase SCP-2/3-oxoacyl-CoA thiolase SCP-2/thiolase SCP-chi SCPX Sterol carrier protein X (SCP-X) SCP2
Observed MW:	60 kDa
Uniprot ID :	P22307

---

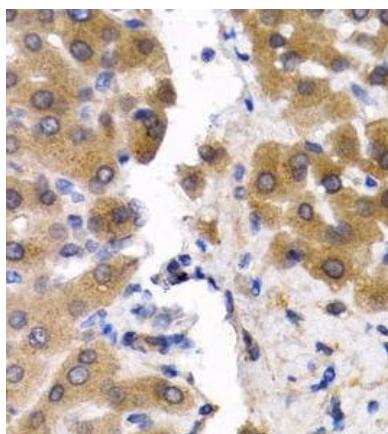
**Application**

Reactivity: Human, Mouse

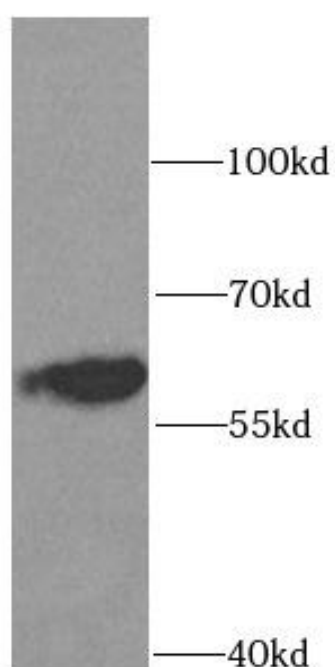
Tested Application: ELISA, WB, IHC

Recommended dilution: WB: 1:500 - 1:2000; IHC: 1:50 - 1:200

Image:



Immunohistochemistry of paraffin-embedded human liver cancer using FNa07652(SCP2 antibody) at dilution of 1:100



mouse liver tissue were subjected to SDS PAGE followed by western blot with FNa07652(SCP2 antibody) at dilution of 1:1000