

## SCML4 antibody

### Product Information

|               |  |
|---------------|--|
| Catalog No.:  | FNab07641  |
| Size:         | 100µg  |
| Form:         | liquid   |
| Purification: | Immunogen affinity purified  |
| Purity:       | ≥95% as determined by SDS-PAGE   |
| Host:         | Rabbit   |
| Clonality:    | polyclonal   |
| Clone ID:     | None   |
| IsoType:      | IgG  |
| Storage:      | PBS with 0.02% sodium azide and 50% glycerol pH 7.3, -20°C for 12 months(Avoid repeated freeze / thaw cycles.) |

### Background

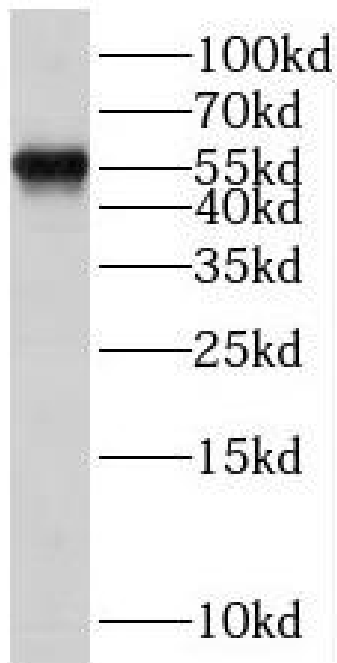
Putative Polycomb group(PcG) protein. PcG proteins act by forming multiprotein complexes, which are required to maintain the transcriptionally repressive state of homeotic genes throughout development(By similarity).

### Immunogen information

|              |   |
|--------------|---|
| Immunogen:   | sex comb on midleg-like 4(Drosophila)   |
| Synonyms:    | Sex comb on midleg-like protein 4 SCML4 |
| Observed MW: | 50-60 kDa                               |
| Uniprot ID : | Q8N228                                  |

### Application

|                          |              |
|--------------------------|--------------|
| Reactivity:              | Human, Mouse |
| Tested Application:      | ELISA, WB    |
| Recommended dilution:WB: | 1:500-1:2000 |
| Image:                   |              |



mouse liver tissue were subjected to SDS PAGE followed by western blot with FNab07641( SCML4 Antibody) at dilution of 1:600