

SCLY antibody

Product Information

Catalog No.:	FNab07637
Size:	100µg
Form:	liquid
Purification:	Immunogen affinity purified
Purity:	≥95% as determined by SDS-PAGE
Host:	Rabbit
Clonality:	polyclonal
Clone ID:	None
IsoType:	IgG
Storage:	PBS with 0.02% sodium azide and 50% glycerol pH 7.3, -20°C for 12 months(Avoid repeated freeze / thaw cycles.)

Background

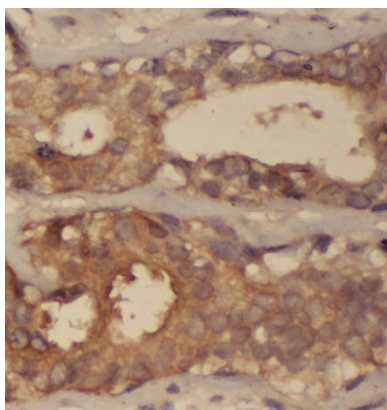
Catalyzes the decomposition of L-selenocysteine to L-alanine and elemental selenium.

Immunogen information

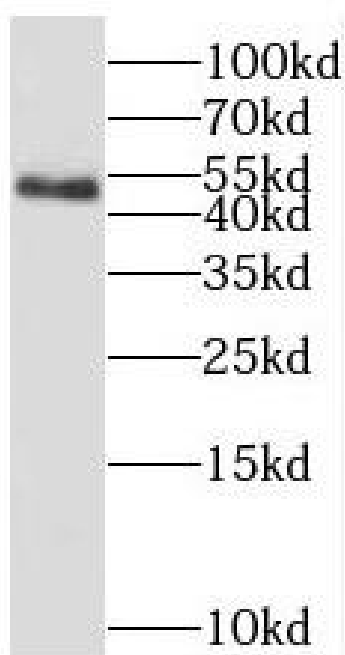
Immunogen:	selenocysteine lyase
Synonyms:	Selenocysteine lyase (hSCL) SCLY SCL
Observed MW:	48 kDa
Uniprot ID :	Q96I15

Application

Reactivity:	Human, Mouse, Rat
Tested Application:	ELISA, WB, IHC
Recommended dilution:	WB: 1:500-1:2000; IHC: 1:20-1:200
Image:	



Immunohistochemistry of paraffin-embedded human breast cancer using FNab07637(SCLY antibody) at dilution of 1:100



mouse liver tissue were subjected to SDS PAGE followed by western blot with FNab07637(SCLY antibody) at dilution of 1:500