

## CLEC11A antibody

### Product Information

Catalog No.:	FNab07632
Size:	100µg
Form:	liquid
Purification:	Immunogen affinity purified
Purity:	≥95% as determined by SDS-PAGE
Host:	Rabbit
Clonality:	polyclonal
Clone ID:	None
IsoType:	IgG
Storage:	PBS with 0.02% sodium azide and 50% glycerol pH 7.3, -20°C for 12 months(Avoid repeated freeze / thaw cycles.)

### Background

CLEC11A, also named as CLECSF3, LSLCL, SCGF and p47, stimulates the proliferation and differentiation of hematopoietic precursor cells from various lineages, including erythrocytes, lymphocytes, granulocytes and macrophages. CLEC11A acts synergistically with other cytokines, including IL-3, GCSF, GMCSF and FLT3 ligand. It suppresses SCF-stimulated erythrocyte proliferation. The antibody is specific to CLEC11A.

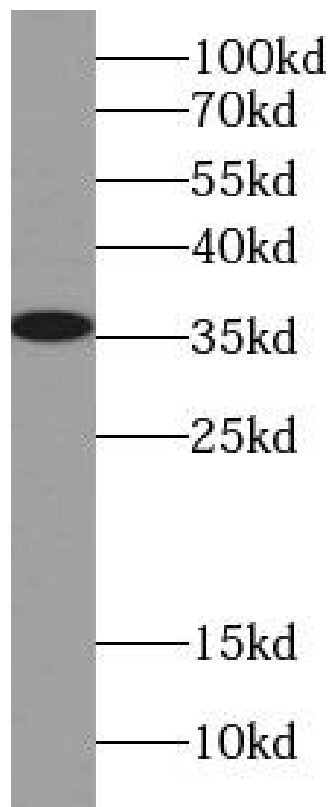
### Immunogen information

Immunogen:	C-type lectin domain family 11, member A
Synonyms:	C-type lectin domain family 11 member A C-type lectin superfamily member 3 Lymphocyte secreted C-type lectin Osteolectin Stem cell growth factor p47 CLEC11A CLECSF3 LSLCL SCGF
Observed MW:	36 kDa
Uniprot ID :	Q9Y240

### Application

Reactivity:	Human, Mouse, Rat
Tested Application:	ELISA, WB
Recommended dilution:WB:	1:200-1:2000

Image:



human skeletal muscle tissue were subjected to SDS PAGE followed by western blot with FNab07632(SCGF antibody) at dilution of 1:500