

SCFD1 antibody

Product Information

Catalog No.:	FNab07629
Size:	100µg
Form:	liquid
Purification:	Immunogen affinity purified
Purity:	≥95% as determined by SDS-PAGE
Host:	Rabbit
Clonality:	polyclonal
Clone ID:	None
IsoType:	IgG
Storage:	PBS with 0.02% sodium azide and 50% glycerol pH 7.3, -20°C for 12 months(Avoid repeated freeze / thaw cycles.)

Background

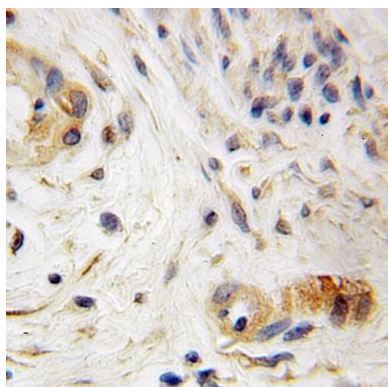
Plays a role in SNARE-pin assembly and Golgi-to-ER retrograde transport via its interaction with COG4. Involved in vesicular transport between the endoplasmic reticulum and the Golgi(By similarity).

Immunogen information

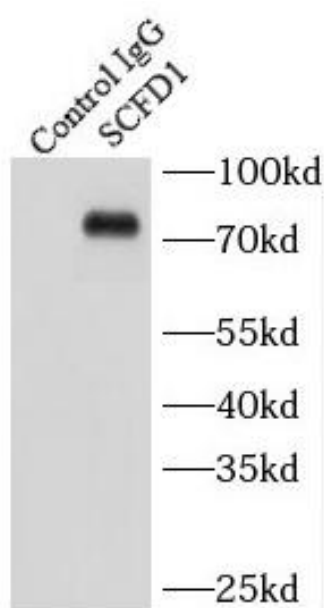
Immunogen:	sec1 family domain containing 1
Synonyms:	Sec1 family domain-containing protein 1 SLY1 homolog (Sly1p) Syntaxin-binding protein 1-like 2 SCFD1 C14orf163 KIAA0917 STXBP1L2
Observed MW:	66-72 kDa
Uniprot ID :	Q8WVM8

Application

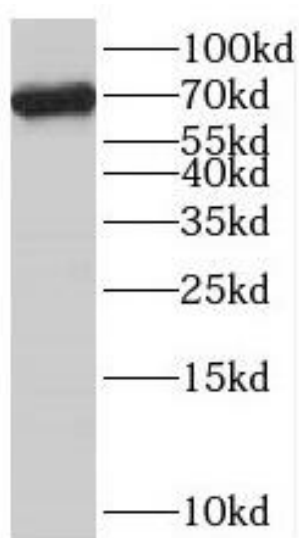
Reactivity:	Human, Mouse, Rat
Tested Application:	ELISA, WB, IHC, IF, IP
Recommended dilution:	WB: 1:500-1:2000; IP: 1:200-1:1000; IHC: 1:20-1:200; IF: 1:20-1:200
Image:	



Immunohistochemistry of paraffin-embedded human endometrial cancer using FNab07629(SCFD1 antibody) at dilution of 1:50



IP Result of anti-SCFD1 (IP:FNab07629, 3ug; Detection:FNab07629 1:500) with HeLa cells lysate 2150ug.



A549 cells were subjected to SDS PAGE followed by western blot with FNab07629(SCFD1 antibody) at dilution of 1:500