

SCEL antibody

Product Information

Catalog No.:	FNab07628
Size:	100µg
Form:	liquid
Purification:	Immunogen affinity purified
Purity:	≥95% as determined by SDS-PAGE
Host:	Rabbit
Clonality:	polyclonal
Clone ID:	None
IsoType:	IgG
Storage:	PBS with 0.02% sodium azide and 50% glycerol pH 7.3, -20°C for 12 months(Avoid repeated freeze / thaw cycles.)

Background

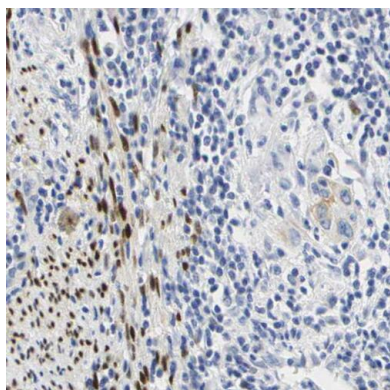
May function in the assembly or regulation of proteins in the cornified envelope. The LIM domain may be involved in homotypic or heterotypic associations and may function to localize sciellin to the cornified envelope.

Immunogen information

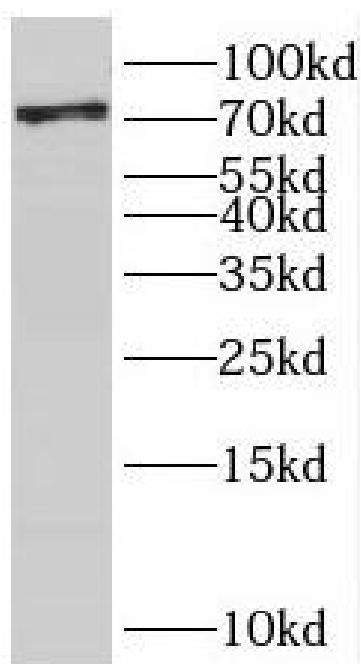
Immunogen:	sciellin
Synonyms:	Sciellin SCEL
Observed MW:	70-78 kDa
Uniprot ID :	O95171

Application

Reactivity:	Human
Tested Application:	ELISA, WB, IHC, IF, FC
Recommended dilution:	WB: 1:500-1:2000; IHC: 1:20-1:200; IF: 1:20-1:200
Image:	



Immunohistochemistry of paraffin-embedded human cervical cancer using FNab07628(SCEL antibody) at dilution of 1:100



A431 cells were subjected to SDS PAGE followed by western blot with FNab07628(SCEL antibody) at dilution of 1:300