

SASS6 antibody

Product Information

Catalog No.:	FNab07613
Size:	100µg
Form:	liquid
Purification:	Immunogen affinity purified
Purity:	≥95% as determined by SDS-PAGE
Host:	Rabbit
Clonality:	polyclonal
Clone ID:	None
IsoType:	IgG
Storage:	PBS with 0.02% sodium azide and 50% glycerol pH 7.3, -20°C for 12 months(Avoid repeated freeze / thaw cycles.)

Background

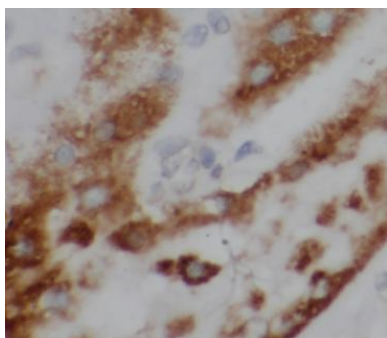
Central scaffolding component of the centrioles ensuring their 9-fold symmetry. Required for centrosome biogenesis and duplication: required both for mother-centriole-dependent centriole duplication and deuterosome-dependent centriole amplification in multiciliated cells. Overexpression results in excess foci-bearing centriolar markers. Required for the recruitment of STIL to the procentriole and for STIL-mediated centriole amplification(PubMed:22020124).

Immunogen information

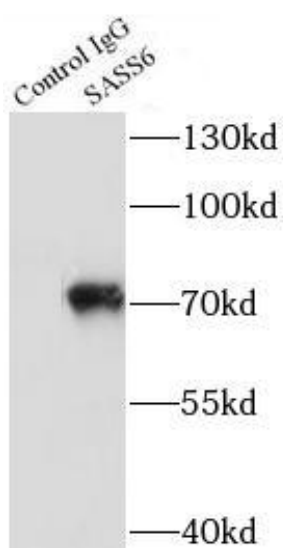
Immunogen:	spindle assembly 6 homolog
Synonyms:	Spindle assembly abnormal protein 6 homolog (HsSAS-6) SASS6 SAS6
Observed MW:	74 kDa
Uniprot ID :	Q6UVJ0

Application

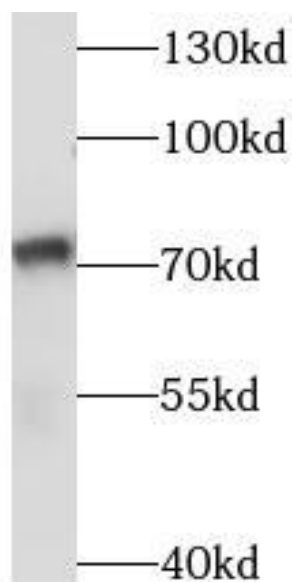
Reactivity:	Human
Tested Application:	ELISA, WB, IHC, IP
Recommended dilution:	WB: 1:500-1:2000; IP: 1:500-1:2000; IHC: 1:20-1:200
Image:	



Immunohistochemistry of paraffin-embedded human kidney slide using FNab07613(SASS6 Antibody) at dilution of 1:50



IP Result of anti-SASS6 (IP: FNab07613, 4ug; Detection: FNab07613 1:1000) with HeLa cells lysate 800ug.



HeLa cells were subjected to SDS PAGE followed by western blot with FNab07613(SASS6 antibody) at dilution of 1:1000