

SAFB2 antibody

Product Information

Catalog No.:	FNab07579
Size:	100µg
Form:	liquid
Purification:	Immunogen affinity purified
Purity:	≥95% as determined by SDS-PAGE
Host:	Rabbit
Clonality:	polyclonal
Clone ID:	None
IsoType:	IgG
Storage:	PBS with 0.02% sodium azide and 50% glycerol pH 7.3, -20°C for 12 months (Avoid repeated freeze / thaw cycles.)

Background

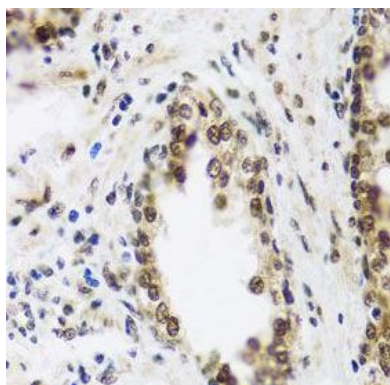
The protein encoded by this gene, along with its paralog (scaffold attachment factor B1), is a repressor of estrogen receptor alpha. The encoded protein binds scaffold/matrix attachment region (S/MAR) DNA and is involved in cell cycle regulation, apoptosis, differentiation, the stress response, and regulation of immune genes.

Immunogen information

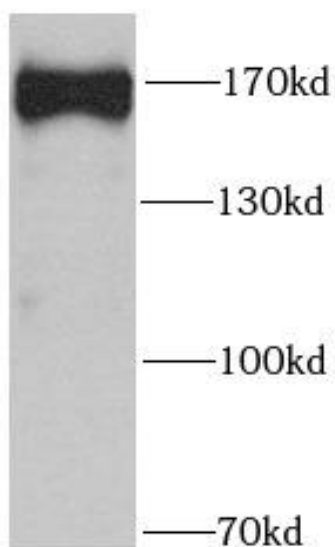
Immunogen:	scaffold attachment factor B2
Synonyms:	Scaffold attachment factor B2 (SAF-B2) SAFB2 KIAA0138
Observed MW:	160 kDa
Uniprot ID :	Q14151

Application

Reactivity:	Human, Mouse, Rat
Tested Application:	ELISA, WB, IHC
Recommended dilution:	WB: 1:1000 - 1:2000; IHC: 1:50 - 1:200
Image:	



Immunohistochemistry of paraffin-embedded human prostate using FNab07579(SAFB2 antibody) at dilution of 1:50



human brain tissue were subjected to SDS PAGE followed by western blot with FNab07579(SAFB2 antibody) at dilution of 1:1000