

## RWDD3 antibody

### Product Information

Catalog No.:	FNab07540
Size:	100µg
Form:	liquid
Purification:	Immunogen affinity purified
Purity:	≥95% as determined by SDS-PAGE
Host:	Rabbit
Clonality:	polyclonal
Clone ID:	None
IsoType:	IgG
Storage:	PBS with 0.02% sodium azide and 50% glycerol pH 7.3, -20°C for 12 months(Avoid repeated freeze / thaw cycles.)

### Background

Enhancer of SUMO conjugation. Via its interaction with UBE2I/UBC9, increases SUMO conjugation to proteins by promoting the binding of E1 and E2 enzymes, thioester linkage between SUMO and UBE2I/UBC9 and transfer of SUMO to specific target proteins which include HIF1A, PIAS, NFKBIA, NR3C1 and TOP1. Isoform 1 and isoform 2 positively regulate the NF-kappa-B signaling pathway by enhancing the sumoylation of NF-kappa-B inhibitor alpha(NFKBIA), promoting its stabilization which consequently leads to an increased inhibition of NF-kappa-B transcriptional activity. Isoform 1 and isoform 2 negatively regulate the hypoxia-inducible factor-1 alpha(HIF1A) signaling pathway by increasing the sumoylation of HIF1A, promoting its stabilization, transcriptional activity and the expression of its target gene VEGFA during hypoxia. Isoform 2 promotes the sumoylation and transcriptional activity of the glucocorticoid receptor NR3C1 and enhances the interaction of SUMO1 and NR3C1 with UBE2I/UBC9. Has no effect on ubiquitination.

### Immunogen information

Immunogen:	RWD domain containing 3
Synonyms:	RWD domain-containing protein 3 RWD domain-containing sumoylation enhancer (RSUME) RWDD3 RSUME
Observed MW:	None
Uniprot ID :	Q9Y3V2

---

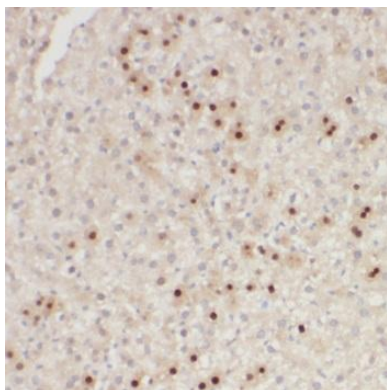
**Application**

Reactivity: Human

Tested Application: ELISA, IHC

Recommended dilution: IHC: 1:20-1:200

Image:



Immunohistochemistry of paraffin-embedded human liver using FNab07540(RWDD3 antibody) at dilution of 1:50