

RTCB-Specific antibody

Product Information

Catalog No.:	FNab07515
Size:	100µg
Form:	liquid
Purification:	Immunogen affinity purified
Purity:	≥95% as determined by SDS-PAGE
Host:	Rabbit
Clonality:	polyclonal
Clone ID:	None
IsoType:	IgG
Storage:	PBS with 0.02% sodium azide and 50% glycerol pH 7.3, -20°C for 12 months(Avoid repeated freeze / thaw cycles.)

Background

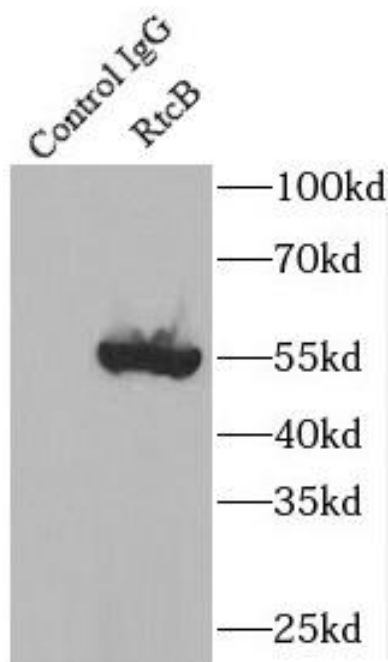
None

Immunogen information

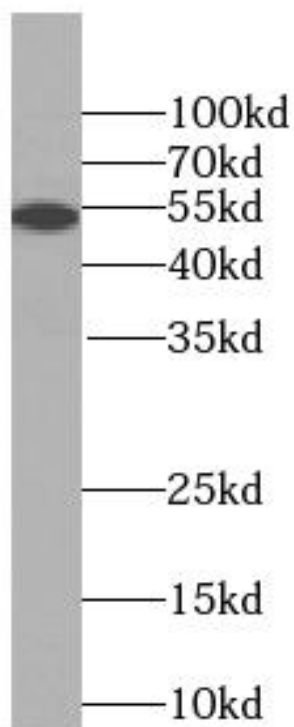
Immunogen:	chromosome 22 open reading frame 28
Synonyms:	RNA-splicing ligase RtcB homolog 3'-phosphate/5'-hydroxy nucleic acid ligase RTCB C22orf28
Observed MW:	55 kDa
Uniprot ID :	Q9Y3I0

Application

Reactivity:	Human, Mouse
Tested Application:	ELISA, WB, IF, IP
Recommended dilution:	WB: 1:1000-1:4000; IP: 1:500-1:1000;IF: 1:10-1:100
Image:	



IP Result of anti-RtcB-Specific (IP:FNab07515, 3ug; Detection:FNab07515 1:500) with HeLa cells lysate 3000ug.



HeLa cells were subjected to SDS PAGE followed by western blot with FNab07515(RtcB-Specific Antibody) at dilution of 1:1500