

## RPS6KL1 antibody

### Product Information

Catalog No.:	FNab07483
Size:	100µg
Form:	liquid
Purification:	Immunogen affinity purified
Purity:	≥95% as determined by SDS-PAGE
Host:	Rabbit
Clonality:	polyclonal
Clone ID:	None
IsoType:	IgG
Storage:	PBS with 0.02% sodium azide and 50% glycerol pH 7.3, -20°C for 12 months (Avoid repeated freeze / thaw cycles.)

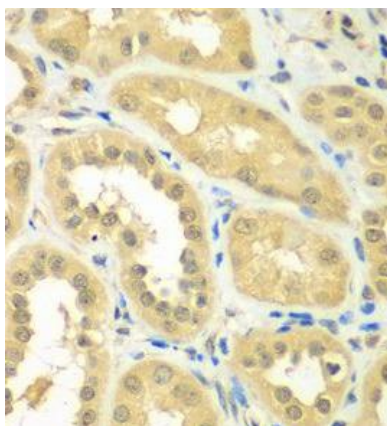
### Background

#### Immunogen information

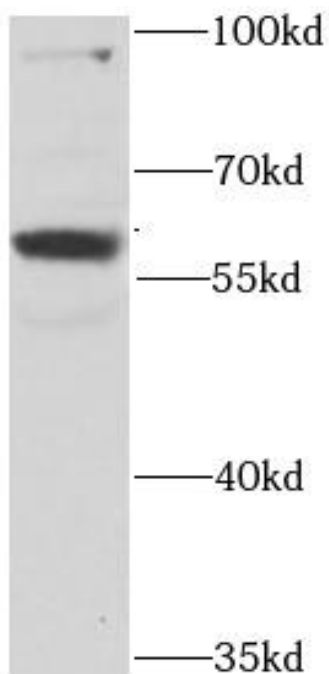
Immunogen:	ribosomal protein S6 kinase-like 1
Synonyms:	Ribosomal protein S6 kinase-like 1 RPS6KL1
Observed MW:	60 kDa
Uniprot ID :	Q9Y6S9

#### Application

Reactivity:	Human, Mouse
Tested Application:	ELISA, WB, IHC, IF
Recommended dilution:	WB: 1:500 - 1:2000; IHC: 1:50 - 1:200; IF: 1:50 - 1:200
Image:	



Immunohistochemistry of paraffin-embedded human kidney using FNab07483( RPS6KL1 Antibody) at dilution of 1:50



CHO cells were subjected to SDS PAGE followed by western blot with FNab07483( RPS6KL1 Antibody) at dilution of 1:1000