

## RPS12 antibody

### Product Information

Catalog No.:	FNab07458
Size:	100µg
Form:	liquid
Purification:	Immunogen affinity purified
Purity:	≥95% as determined by SDS-PAGE
Host:	Rabbit
Clonality:	polyclonal
Clone ID:	None
IsoType:	IgG
Storage:	PBS with 0.02% sodium azide and 50% glycerol pH 7.3, -20°C for 12 months (Avoid repeated freeze / thaw cycles.)

### Background

Ribosomes, the organelles that catalyze protein synthesis, consist of a small 40S subunit and a large 60S subunit. Together these subunits are composed of 4 RNA species and approximately 80 structurally distinct proteins. This gene encodes a ribosomal protein that is a component of the 40S subunit. The protein belongs to the S12E family of ribosomal proteins. It is located in the cytoplasm. Increased expression of this gene in colorectal cancers compared to matched normal colonic mucosa has been observed. As is typical for genes encoding ribosomal proteins, there are multiple processed pseudogenes of this gene dispersed through the genome.

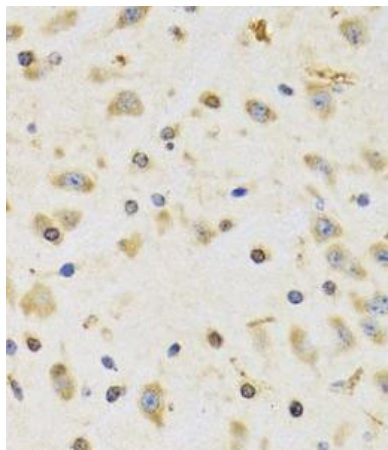
### Immunogen information

Immunogen:	ribosomal protein S12
Synonyms:	Small ribosomal subunit protein eS12 40S ribosomal protein S12 RPS12
Observed MW:	15 kDa
Uniprot ID :	P25398

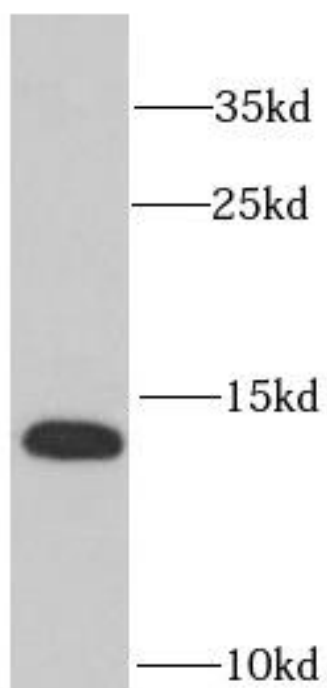
### Application

Reactivity:	Human, Mouse, Rat
Tested Application:	ELISA, WB, IHC, IF
Recommended dilution:	WB: 1:500 - 1:2000; IHC: 1:50 - 1:200; IF: 1:10 - 1:100

Image:



Immunohistochemistry of paraffin-embedded rat brain using FNab07458(RPS12 antibody) at dilution of 1:50



HeLa cells were subjected to SDS PAGE followed by western blot with FNab07458(RPS12 antibody) at dilution of 1:1000