

RPL37A antibody

Product Information

Catalog No.:	FNab07436
Size:	100µg
Form:	liquid
Purification:	Immunogen affinity purified
Purity:	≥95% as determined by SDS-PAGE
Host:	Rabbit
Clonality:	polyclonal
Clone ID:	None
IsoType:	IgG
Storage:	PBS with 0.02% sodium azide and 50% glycerol pH 7.3, -20°C for 12 months(Avoid repeated freeze / thaw cycles.)

Background

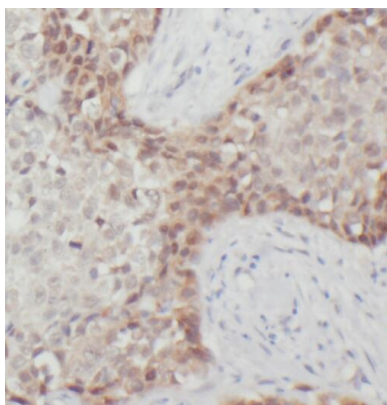
None

Immunogen information

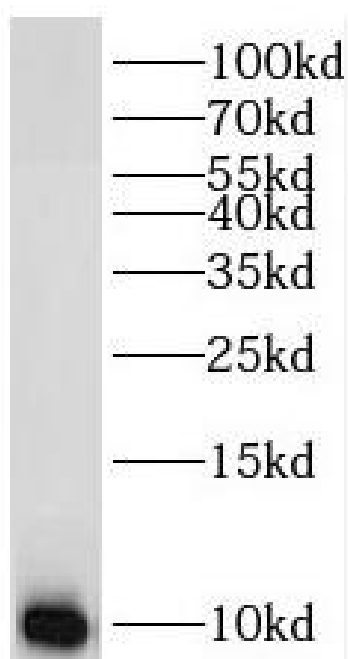
Immunogen:	ribosomal protein L37a
Synonyms:	Large ribosomal subunit protein eL43 60S ribosomal protein L37a RPL37A
Observed MW:	10 kDa
Uniprot ID :	P61513

Application

Reactivity:	Human, Mouse, Rat
Tested Application:	ELISA, WB, IHC
Recommended dilution:	WB: 1:500-1:2000; IHC: 1:20-1:200
Image:	



Immunohistochemistry of paraffin-embedded human breast cancer using FNab07436(RPL37A antibody) at dilution of 1:100



MCF7 cells were subjected to SDS PAGE followed by western blot with FNab07436(RPL37A antibody) at dilution of 1:400