

RPL3 antibody

Product Information

Catalog No.:	FNab07430
Size:	100µg
Form:	liquid
Purification:	Protein A+G purification
Purity:	≥95% as determined by SDS-PAGE
Host:	Mouse
Clonality:	monoclonal
Clone ID:	3F3
IsoType:	IgG1
Storage:	PBS with 0.02% sodium azide and 50% glycerol pH 7.3, -20°C for 12 months(Avoid repeated freeze / thaw cycles.)

Background

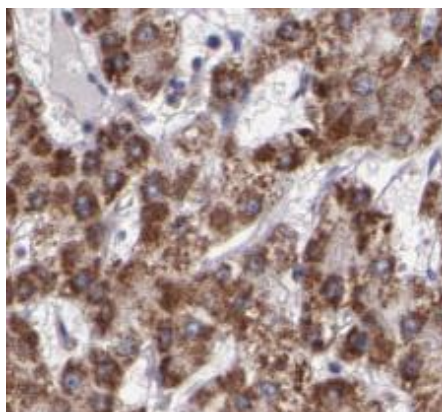
The L3 protein is a component of the large subunit of cytoplasmic ribosomes.

Immunogen information

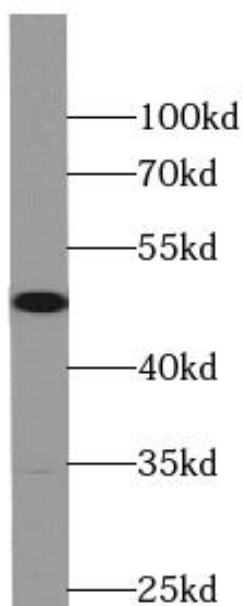
Immunogen:	ribosomal protein L3
Synonyms:	Large ribosomal subunit protein uL3 60S ribosomal protein L3 HIV-1 TAR RNA-binding protein B (TARBP-B) RPL3
Observed MW:	46 kDa
Uniprot ID :	P39023

Application

Reactivity:	Human
Tested Application:	ELISA, WB, IHC, IF
Recommended dilution:	WB: 1:1000-1:8000; IHC: 1:50-1:500; IF: 1:20-1:100
Image:	



Immunohistochemistry of paraffin-embedded human liver cancer tissue slide using FNab07430(RPL3 Antibody) at dilution of 1:600 heat mediated antigen retrieved with Tris-EDTA buffer(pH9).



Western blot analysis of RPL3 in various cell lines using Fine Test antibody FNab07430