

RPL26L1 antibody

Product Information

Catalog No.:	FNab07425
Size:	100µg
Form:	liquid
Purification:	Immunogen affinity purified
Purity:	≥95% as determined by SDS-PAGE
Host:	Rabbit
Clonality:	polyclonal
Clone ID:	None
IsoType:	IgG
Storage:	PBS with 0.02% sodium azide and 50% glycerol pH 7.3, -20°C for 12 months(Avoid repeated freeze / thaw cycles.)

Background

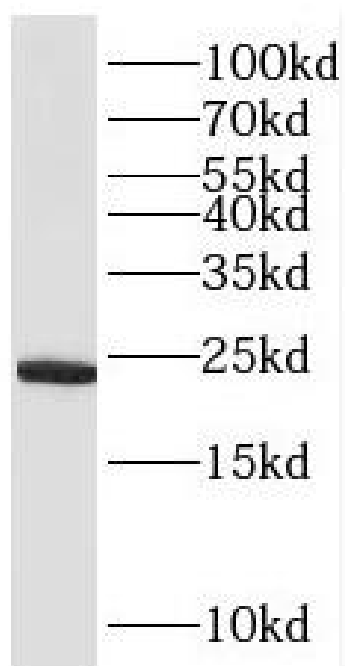
None

Immunogen information

Immunogen:	ribosomal protein L26-like 1
Synonyms:	Ribosomal protein uL24-like 60S ribosomal protein L26-like 1 Large ribosomal subunit protein uL24-like 1 RPL26L1 RPL26P1
Observed MW:	22-25 kDa
Uniprot ID :	Q9UNX3

Application

Reactivity:	Human, Mouse, Rat
Tested Application:	ELISA, WB
Recommended dilution:	WB: 1:500-1:2000
Image:	



HeLa cells were subjected to SDS PAGE followed by western blot with FNab07425(RPL26L1 antibody) at dilution of 1:500