

RPL24 antibody

Product Information

| | |
|---------------|--|
| Catalog No.: | FNab07424 |
| Size: | 100µg |
| Form: | liquid |
| Purification: | Immunogen affinity purified |
| Purity: | ≥95% as determined by SDS-PAGE |
| Host: | Rabbit |
| Clonality: | polyclonal |
| Clone ID: | None |
| IsoType: | IgG |
| Storage: | PBS with 0.02% sodium azide and 50% glycerol pH 7.3, -20°C for 12 months(Avoid repeated freeze / thaw cycles.) |

Background

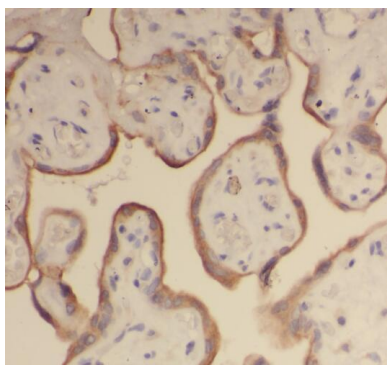
None

Immunogen information

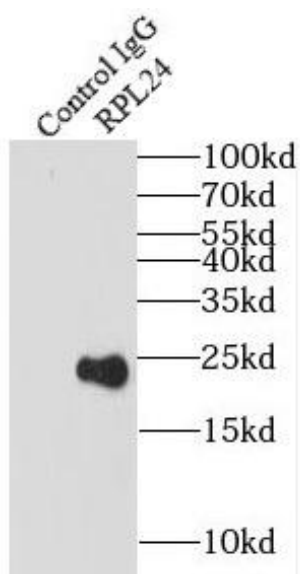
| | |
|--------------|--|
| Immunogen: | ribosomal protein L24 |
| Synonyms: | Large ribosomal subunit protein eL24 60S ribosomal protein L24 60S ribosomal protein L30 RPL24 |
| Observed MW: | 21-23 kDa |
| Uniprot ID : | P83731 |

Application

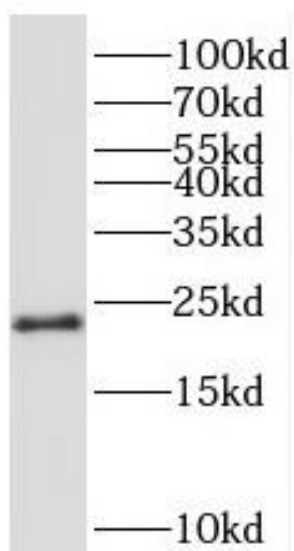
| | |
|-----------------------|---|
| Reactivity: | Human, Mouse, Rat |
| Tested Application: | ELISA, WB, IHC, IF, IP |
| Recommended dilution: | WB: 1:500-1:2000; IP: 1:200-1:1000; IHC: 1:20-1:200; IF: 1:20-1:200 |
| Image: | |



Immunohistochemistry of paraffin-embedded human placenta using FNab07424(RPL24 antibody) at dilution of 1:100



IP Result of anti-RPL24 (IP:FNab07424, 3ug; Detection:FNab07424 1:500) with A549 cells lysate 2800ug.



Jurkat cells were subjected to SDS PAGE followed by western blot with FNab07424(RPL24 antibody) at dilution of 1:500