

RPL18A antibody

Product Information

Catalog No.:	FNab07417
Size:	100µg
Form:	liquid
Purification:	Immunogen affinity purified
Purity:	≥95% as determined by SDS-PAGE
Host:	Rabbit
Clonality:	polyclonal
Clone ID:	None
IsoType:	IgG
Storage:	PBS with 0.02% sodium azide and 50% glycerol pH 7.3, -20°C for 12 months(Avoid repeated freeze / thaw cycles.)

Background

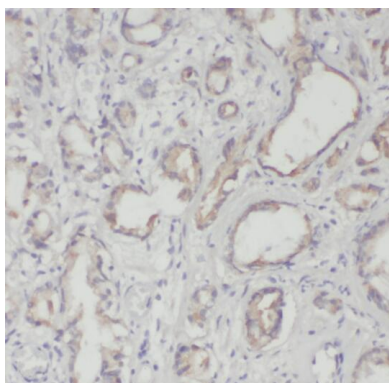
None

Immunogen information

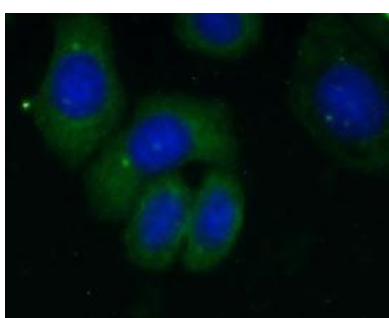
Immunogen:	ribosomal protein L18a
Synonyms:	Large ribosomal subunit protein eL20 60S ribosomal protein L18a RPL18A
Observed MW:	21 kDa
Uniprot ID :	Q02543

Application

Reactivity:	Human, Mouse, Rat
Tested Application:	ELISA, WB, IHC, IF
Recommended dilution:	WB: 1:200-1:1000; IHC: 1:20-1:200; IF: 1:10-1:100
Image:	



Immunohistochemistry of paraffin-embedded human prostate cancer tissue using FNab07417(RPL18A antibody) at dilution of 1:100



Immunofluorescent analysis of HepG2 cells using FNab07417 (RPL18A antibody) at dilution of 1:25 and Alexa Fluor 488-conjugated Goat Anti-Rabbit IgG(H+L)



HepG2 cells were subjected to SDS PAGE followed by western blot with FNab07417(RPL18A antibody) at dilution of 1:500