

## POLR2E antibody

### Product Information

Catalog No.:	FNab07399
Size:	100µg
Form:	liquid
Purification:	Immunogen affinity purified
Purity:	≥95% as determined by SDS-PAGE
Host:	Rabbit
Clonality:	polyclonal
Clone ID:	None
IsoType:	IgG
Storage:	PBS with 0.02% sodium azide and 50% glycerol pH 7.3, -20°C for 12 months(Avoid repeated freeze / thaw cycles.)

### Background

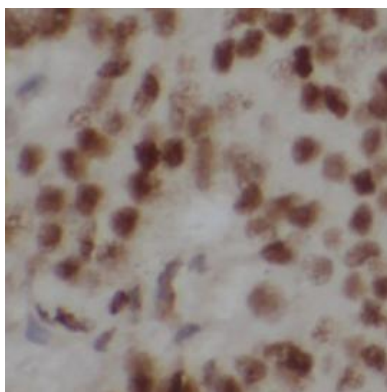
None

### Immunogen information

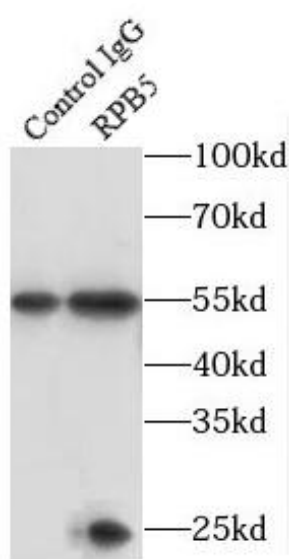
Immunogen:	polymerase(RNA) II(DNA directed) polypeptide E, 25kDa
Synonyms:	DNA-directed RNA polymerases I, II, and III subunit RPABC1 (RNA polymerases I, II, and III subunit ABC1) DNA-directed RNA polymerase II 23 kDa polypeptide DNA-directed RNA polymerase II subunit E RPB5 homolog XAP4 POLR2E
Observed MW:	25 kDa
Uniprot ID :	P19388

### Application

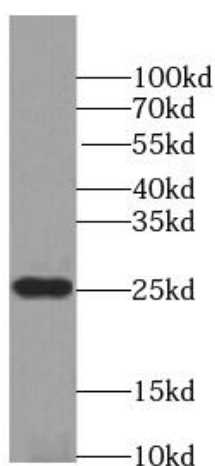
Reactivity:	Human, Mouse, Rat
Tested Application:	ELISA, IHC, WB, IP
Recommended dilution:	WB: 1:500-1:2000; IP: 1:500-1:1000;; IHC: 1:50-1:500
Image:	



Immunohistochemistry of paraffin-embedded human breast cancer using FAb07399(POLR2E antibody) at dilution of 1:100



IP Result of anti-RPB5 (IP:FAb07399, 4ug; Detection:FAb07399 1:500) with HeLa cells lysate 880ug.



Jurkat cells were subjected to SDS PAGE followed by western blot with FAb07399(POLR2E antibody) at dilution of 1:1000