

## SCPEP1 antibody

### Product Information

Catalog No.:	FNab07316
Size:	100µg
Form:	liquid
Purification:	Protein A+G purification
Purity:	≥95% as determined by SDS-PAGE
Host:	Mouse
Clonality:	monoclonal
Clone ID:	1C4
IsoType:	IgG1
Storage:	PBS with 0.02% sodium azide and 50% glycerol pH 7.3, -20°C for 12 months(Avoid repeated freeze / thaw cycles.)

### Background

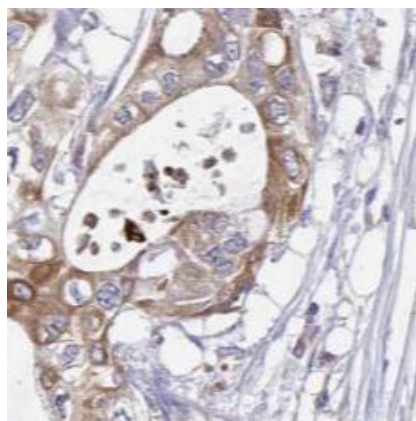
None

### Immunogen information

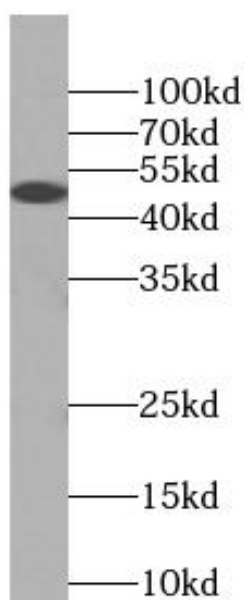
Immunogen:	serine carboxypeptidase 1
Synonyms:	Retinoid-inducible serine carboxypeptidase Serine carboxypeptidase 1 SCPEP1 RISC SCP1
Observed MW:	51 kDa
Uniprot ID :	Q9HB40

### Application

Reactivity:	Human, Mouse
Tested Application:	ELISA, WB, IHC, IF
Recommended dilution:	WB: 1:500-1:2000; IHC: 1:100-1:400; IF: 1:10-1:100
Image:	



Immunohistochemistry of paraffin-embedded human pancreas cancer tissue slide using FNab07316( RISC antibody at dilution of 1:200



human testis tissue were subjected to SDS PAGE followed by western blot with FNab07316(RISC antibody) at dilution of 1:1000