

RHBDD1 antibody

Product Information

Catalog No.:	FNab07277
Size:	100µg
Form:	liquid
Purification:	Immunogen affinity purified
Purity:	≥95% as determined by SDS-PAGE
Host:	Rabbit
Clonality:	polyclonal
Clone ID:	None
IsoType:	IgG
Storage:	PBS with 0.02% sodium azide and 50% glycerol pH 7.3, -20°C for 12 months(Avoid repeated freeze / thaw cycles.)

Background

Intramembrane-cleaving serine protease that cleaves single transmembrane or multi-pass membrane proteins in the hydrophobic plane of the membrane, luminal loops and juxtamembrane regions. Involved in regulated intramembrane proteolysis and the subsequent release of functional polypeptides from their membrane anchors. Functional component of endoplasmic reticulum-associated degradation(ERAD) for misfolded membrane proteins. Required for the degradation process of some specific misfolded endoplasmic reticulum(ER) luminal proteins. Participates in the transfer of misfolded proteins from the ER to the cytosol, where they are destroyed by the proteasome in a ubiquitin-dependent manner. Functions in BIK, MPZ, PKD1, PTCRA, RHO, STEAP3 and TRAC processing. Involved in the regulation of exosomal secretion; inhibits the TSAP6-mediated secretion pathway. Involved in the regulation of apoptosis; modulates BIK-mediated apoptotic activity. Also plays a role in the regulation of spermatogenesis; inhibits apoptotic activity in spermatogonia.

Immunogen information

Immunogen:	rhomboid domain containing 1
Synonyms:	Rhomboid-related protein 4 (RRP4) Rhomboid domain-containing protein 1 Rhomboid-like protein 4 RHBDD1 RHBDDL4
Observed MW:	36 kDa
Uniprot ID :	Q8TEB9

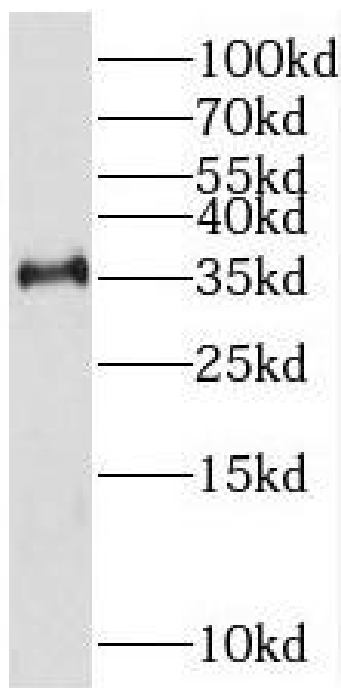
Application

Reactivity: Human, Mouse, Rat

Tested Application: ELISA, WB

Recommended dilution: WB: 1:500-1:2000

Image:



mouse kidney tissue were subjected to SDS PAGE followed by western blot with FNab07277(RHBDD1 antibody) at dilution of 1:3000